



Celebration

20 years of collecting
visual art at CMAG

CANBERRA MUSEUM AND GALLERY

• 24 March - 17 June 2018 •

DIRECTOR'S FOREWORD

In 2018 Canberra Museum and Gallery celebrates 20 years of collecting! During this time CMAG has built a unique and distinctly regional collection of visual art and the social history objects.

Its broad themes embrace our Canberra identity and sense of place, and the acquisition of well over 6,500 objects has been informed by our cultural diversity and our regional history.

Each object has been collected for perpetuity and is therefore managed with the utmost care whether it be on display in CMAG's galleries, at rest in the closely-packed on-site storeroom, or on loan for exhibition elsewhere in Australia or internationally.

Celebration: 20 years of collecting visual art at CMAG provides an enticing glimpse into this compelling collection. Almost 200 works are included stretching from the very first purchases in 1996 such as Jaishree Srinivasan's bold ceramic *Vanity Box* of 1995, to objects only recently gifted to the collection such as Frank Hinder's evocative lithograph *Office staff, Canberra* of 1942. The latter was gifted through the Australian Government's Cultural Gifts Program by Rex & Caroline Stevenson in 2018.

Works of art included in the exhibition date from Joseph Lycett's hand coloured aquatint *View of Lake George, New South Wales, from the north east* rendered in 1825, to Dianne Fogwell's linocut *Encounter* of 2017. Diverse media are also represented, for example by Lyndy Delian's glass *Tortoise shell - connections* of 2011 and Garry Greenwood's *Untitled* (Leather bowl) of 1979.

The CMAG Collection is remarkable not only for the artistry and insight inherent to the individual objects it holds, but also for the rich patterns of connection that can be drawn between them. I acknowledge here the very significant accomplishment of Deborah Clark, CMAG's Senior Curator of Visual Arts, in bringing this fine exhibition to fruition. Her inventive and lateral thinking is much at play in the intriguing connections she reveals between the objects on display.

An exhibition such as this would not exist without the creative vision and labour of the more than 100 artists who have created these objects, the trusted teachers and mentors, and the community of support that surrounds them. Many stories of connection and support between artists, teachers and artists, within and between families, shared studios and collectors are evident in the objects on display. And more connections will come to light in the many on-site programs that accompany the exhibition.

It is also important to recognise the many hundreds of generous donors that have gifted works of art and funds to help grow the CMAG Collection. Their valued support is acknowledged alongside works that they have helped us to acquire.

CMAG develops and cares for its Collection on behalf of and for the community of the Canberra region, and those with an interest in it.

Your own interest in these works and the connections you make between them onsite or as you view this digital catalogue, are also part of our wider story. I encourage you to stay in touch with us, and to become part of the community of connection CMAG nurtures. Visit us on site or online, via our webpage or social media, or join our mailing list and let us know what you think about the collection objects you see on display.

This is your collection after all.

Shane Breynard

Director Canberra Museum
and Gallery

CURATOR'S STATEMENT

The Canberra Museum and Gallery (CMAG) is a youthful institution compared with its regional gallery siblings in New South Wales and Victoria, yet it has been of crucial importance in setting the scene for an understanding of the rich composite visual culture in and around our nation's capital.

The CMAG visual art collection is an integrated collection, and includes fine and applied arts: painting, printmaking, photography, sculpture, ceramics, glass, metalware and jewellery, textiles, and furniture. The twin leitmotifs fundamental to the collection are work made by artists from the region – or with significant regional associations – and art made about the region.

The work of contemporary visual art practitioners based here is fundamental to the CMAG collection and an ongoing imperative, but in recent years there has been a greater focus on collecting historical works of art whose subject is the Canberra region. Representations of the landscape is a rich vein in this art, and the earliest European work in the show – and in the CMAG collection – is Joseph Lycett's *View of Lake George* 1824. This work was likely composed after a drawing by an early European visitor to the area, possibly one of those searching for the Murrumbidgee River in the early 1820s.

The art made by birds of passage is itself a reflection of the social history of Canberra, which until this century had a rather more transient population. Some of the artists who passed through the region were seasonal visitors, and returned a number of times, including Elioth Gruner, the Australian landscape painter who worked consistently in the wider Canberra region in the 1920s and 1930s, enthralled with the quality of light here. Both Ethel Carrick Fox and Frank Hinder spent time in Canberra during World War II, and their works in this exhibition, *Colonnades of Canberra's Civic Centre* 1944 and *Office staff, Canberra* 1942, remain evocative of the Canberra urban experience decades later.

Since the establishment of the ANU School of Art and Design (its current name) in the 1970s, there have been scores of professional artists who have lived and worked here, some visiting for a time, others who have established themselves as key figures in the artistic life of the region. In many ways the art school is the beating heart at the centre of visual arts practice in Canberra and indeed this exhibition. The CMAG collection reflects the enormous influence exerted by the Canberra art school in training and mentoring generations of artists, and includes the work of many of its teachers and graduates.

Udo Sellbach, the inaugural director of the School of Art, fostered the teaching of visual art based on a European workshop model and attracted artists of calibre and international reputation to head the workshops, including Jörg Schmeisser, Head of Printmaking, Petr Herel, Head of Graphic Investigation, Klaus Moje, Head of Glass, George Ingham, Head of Wood, Robert Boynes, Head of Painting, Ingo Kleinert, Head of Photomedia – all represented in this exhibition. Jan Brown, who had studied with Henry Moore at Chelsea Polytechnic in London in the late 1940s, was an influential artist and great mentor to generations of art school students, rigorous in her teaching of life drawing; she is represented here by *Cellist*, the exam work for her diploma in 1949.

One of the great Canberra stories in respect of visual art history is that of Studio One, an independent printmaking workshop founded by Meg Buchanan and Dianne Fogwell that operated in Canberra from 1983 to 2000, and the breadth and quality of the prints produced there is well represented in this exhibition. CMAG was fortunate to receive a gift of Studio One's workshop proofs when it closed its doors in 2000 – the 800 prints a tremendous resource and an important slice of local history.

Over time many artists from around Australia came through Studio One, which expanded from intaglio and relief processes to include lithography in 1987, when Basil Hall became the workshop's Co-Director. Hall was a pioneer in working with Indigenous artists and the striking prints included in this exhibition by Rover Thomas, Emily Kam Kngwararray, Jack Britten and others demonstrate a vital moment in cross-cultural Australian art history. The names of the many artists who worked as printers for Studio One in the 1980s and 1990s, in works that are scattered throughout this exhibition, attest to the interconnectedness of the arts scene in our nation's capital; the list now reads a little like a who's who of artists, curators and other arts administrators trained in the Canberra region.

Of the 186 works of art in *Celebration*, representing 167 artists, significantly more than half have been acquired through donation or purchased with donated funds. This is certainly a recognition by artists and collectors of CMAG's central role in reflecting the visual arts practice of the Canberra region. This exhibition is thus not only a celebration of art in the CMAG collection, it is also a celebration of visual arts practice in the region. Enjoy!

Deborah Clark

Senior Curator, Visual Arts



Ian ABDULLA

(Australia 1947-2011, Ngarrindjeri people,
South Australia) artist
Paul PEISLEY printer, STUDIO ONE INC.
Way to go! 1997
screenprint
39.6 x 37.0 cm
CMAG, gift of Studio One Inc 2000

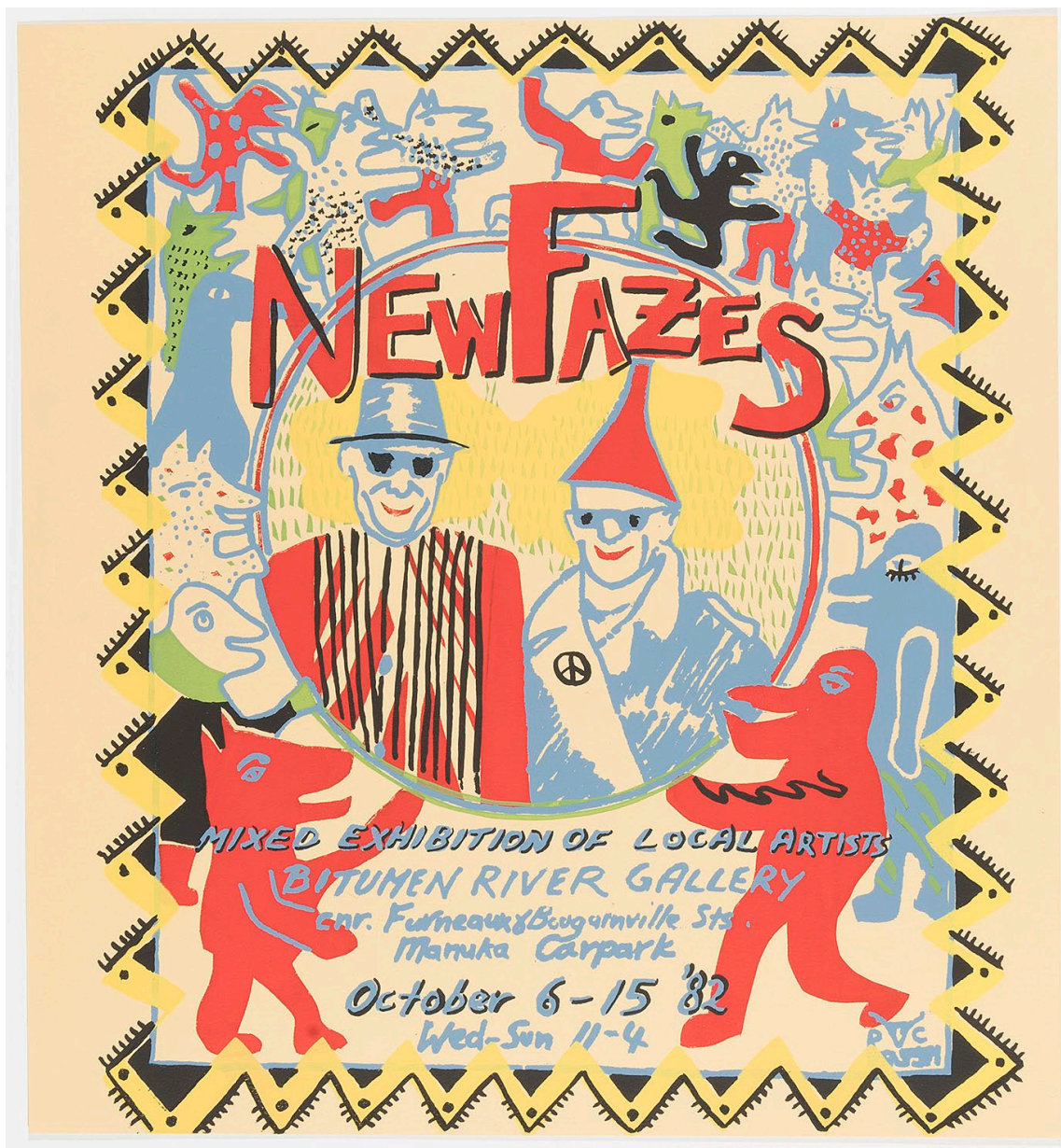


A/P

"Braidwood Café"

CHRIS ABRAHAM

Chris ABRAHAMS
 (born Australia 1965)
 STUDIO ONE INC.
Braidwood café
 etching
 50.0 x 40.0 cm
 CMAG, gift of Studio One Inc 2000



ACME INK print cooperative

New fazes 1982

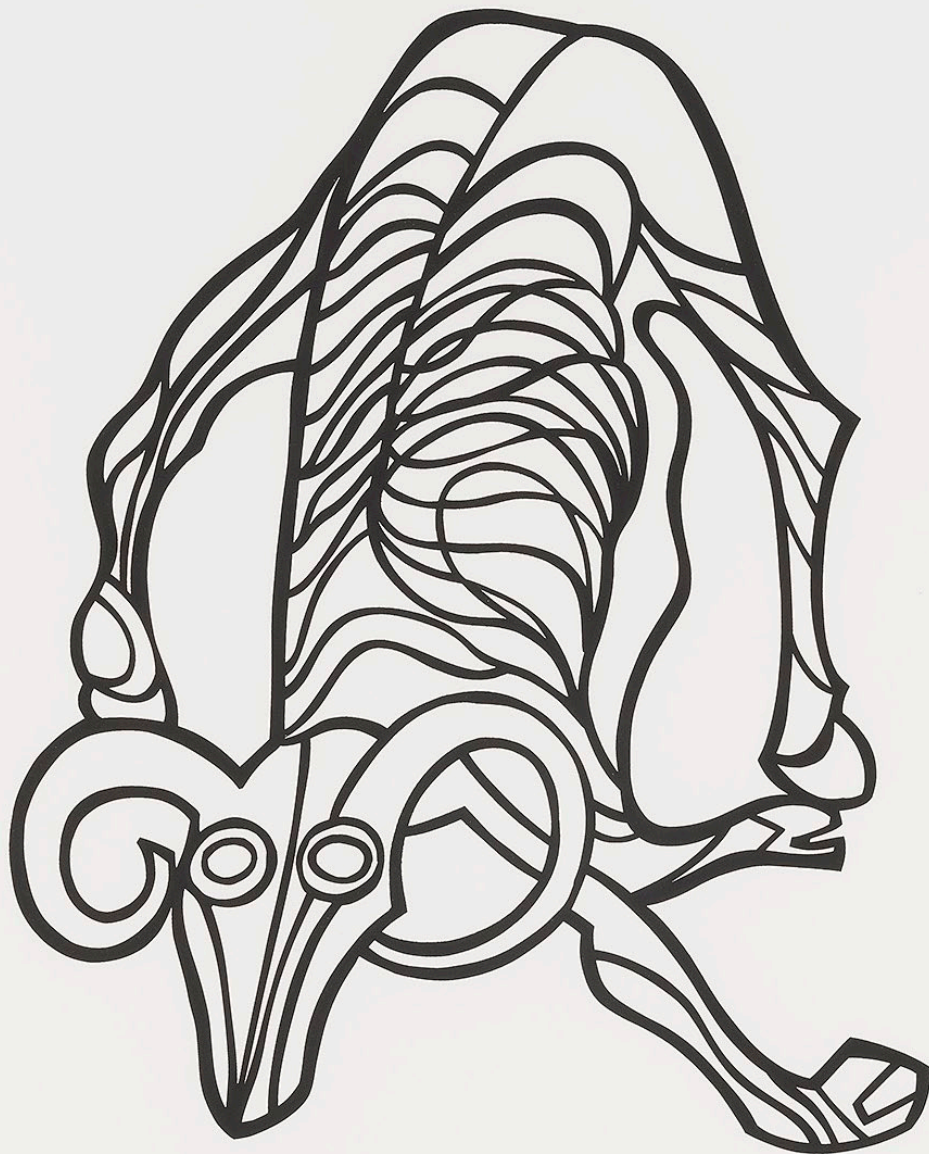
screenprint

54.8 x 50.8 cm

CMAG, donated through the Australian
government's Cultural Gifts Program
by Mandy Martin 1998



Helen AITKEN-KUHNEN
(born Australia 1952)
Brooch 2002
sterling silver, enamel
3.4 x 4.6 x .2 cm
CMAG, purchased 2003



Alison ALDER
(born Australia 1958)
Carcass VIII 2009
screenprint, gouache
112.0 x 76.0 cm
CMAG, purchased 2009



Micky ALLAN
(born Australia 1944)
Poplars (Lake Burley Griffin from Kingston foreshore) 2004
oil on linen
122.0 x 92.0 cm
CMAG, gift of the artist 2014



Joyce ALLEN
(Australia 1916-1992)
STUDIO ONE INC.
The wall
linocut
41.0 x 52.1 cm
CMAG, gift of Studio One Inc 2000



Masahiro ASAKA

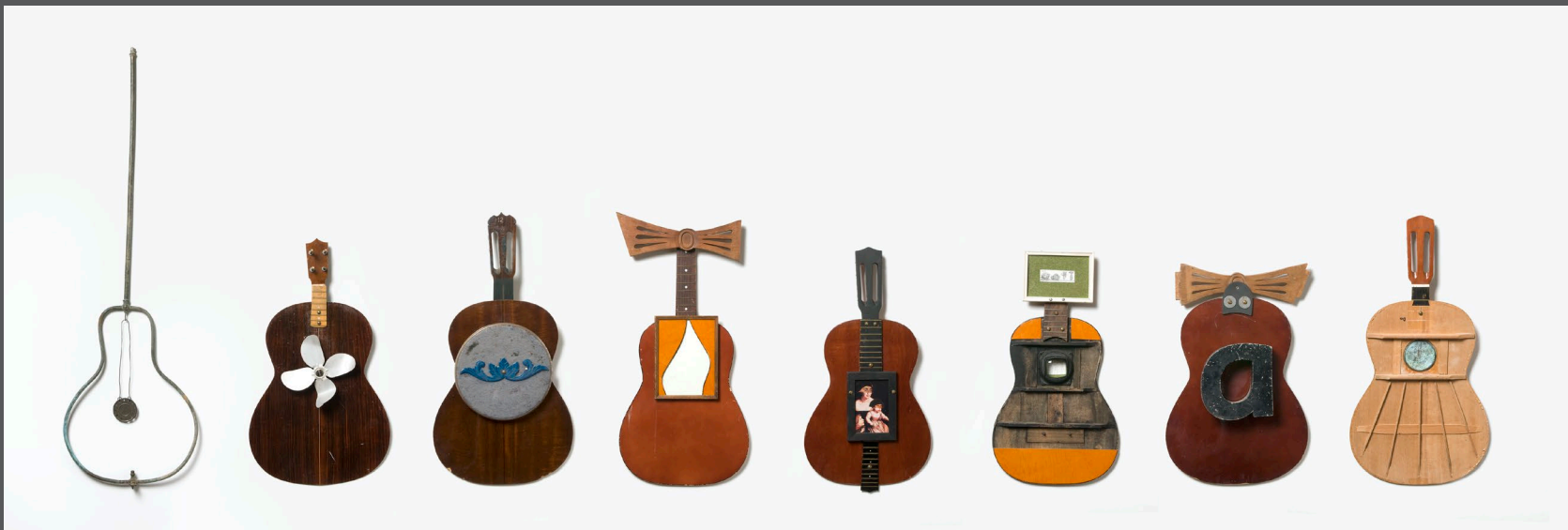
(born Japan 1979, Australia from 2000)

Surge 19 2015

cast glass

50.0 x 50.0 x 50.0 cm

CMAG, purchased 2016 with funds
donated by John Hindmarsh AM
and Rosanna Hindmarsh OAM



Alex ASCH

(born USA 1965, Australia from 1987)

Deconstructed guitars 2009

8 parts; wood guitar bodies, necks and heads, copper pipe, wire, tin, metal fan blades, brass screws, nuts and bolts, stool seat, wood picture frames, textile, cast steel, preformed metal letter, rubber shoe heel, collaged book and magazine reproductions, other mixed media

116.5 cm (longest) x 285.0 cm (overall, no spaces) x 9.2 cm (deepest)

CMAG, purchased 2009



Lionel BAWDEN

(born Australia 1974)

Secretion II 2011

colour pencils, epoxy, clear lacquer, acrylic shelf

29.5 x 12.0 x 24.0 cm (form)

7.5 x 30.0 x 45.0 cm (shelf)

CMAG, donated through the Australian
Government's Cultural Gifts Program



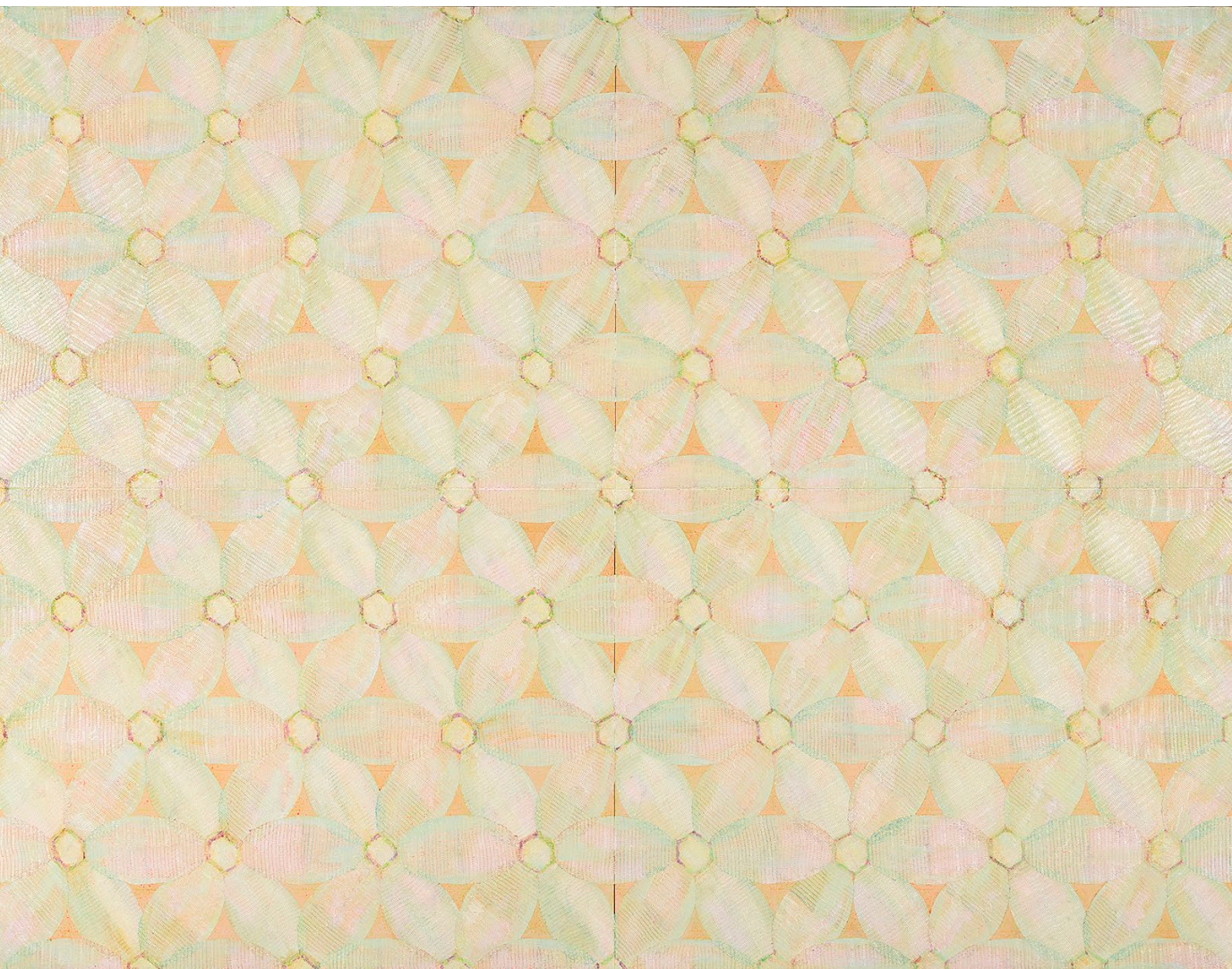
Judy BENJAMIN

Basil HALL printer, STUDIO ONE INC.

Xanthorrhoea country 1993

etching

CMAG, gift of Studio One Inc 2000



Vivienne BINNS
(born Australia 1940)
Fifth translation of nylon mat 2006
synthetic polymer paint on canvas
200.0 x 260.0 cm
CMAG, purchased 2017



Sally BLAKE

(born Australia 1966)

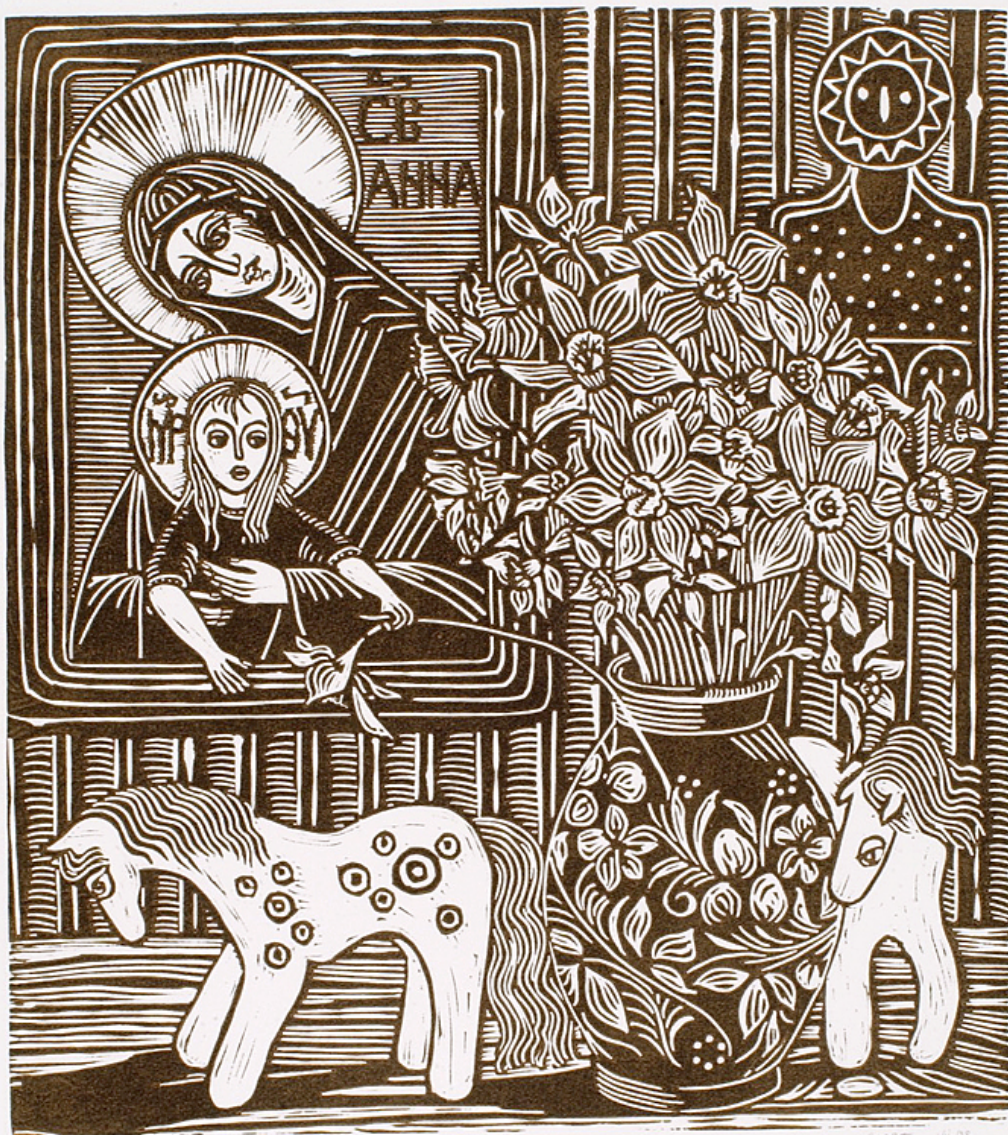
Seed baskets: *Phragmites australis* (bogon fen); *Poa* (snow grass, Smokers Flat);

Sphagnum moss (Snowy Flats) 2014-15

3 parts; silver, silk, wool, plant dyes

dimensions variable

CMAG, purchased with funds from the Meredith Hinchliffe Fund 2016



G W BOT

(born Pakistan 1954, Australia from 1955) artist
Robert RUSSELL printer, STUDIO ONE INC.

Natasha 1988

linocut

61.5 x 54.9 cm

CMAG, gift of Studio One Inc 2000



Rachel BOWAK

(born Australia 1964)

Domestic aircraft 2006

3 parts; TIG welded stainless steel

51.0 x 68.0 x 0.8 cm (overall)

CMAG, purchased with funds from
the Meredith Hinchliffe Fund 2011



Arthur Merric Bloomfield BOYD

(Australia 1920–1999)

The lady and the unicorn 1975

etching/aquatint

60.5 x 42.5 cm

CMAG, gift of Keith and Yvonne Avent 2015



Robert BOYNES
(born Australia 1942)
Paddington lady 1978
synthetic polymer paint on canvas
57.9 x 49.0 cm
CMAG, donated through the Australian
Government's Cultural Gifts Program by
Jack and Clare Golson 2006



Julie Bradley 88

W.P.

Julie BRADLEY
(born Australia 1958) artist
Basil HALL printer, STUDIO ONE INC.
Untitled 1988 [or My bell]
etching/aquatint
33.8 x 26.8 cm
CMAG, gift of Studio One Inc 2000



Jack BRITTEN

(Australia 1924–2002, Gija people, East Kimberley, Western Australia) artist
Theo Tremblay printer, STUDIO ONE INC.
Chris Clear printer, STUDIO ONE INC.
Untitled 1995
lithograph
54.1 x 66.2 cm
CMAG, gift of Studio One Inc 2000



Deirdre BROCKLEBANK

(born Australia 1947)

Views of Canberra (sun top) 1982

hand-picture-knitted and crocheted, commercial cotton with commercial dyes

45.0 x 34.0 cm 1.0 cm

CMAG, purchased with funds from the Meredith Hinchliffe Fund 2016



Jan BROWN
(born Australia 1922)
Cellist 1949
plaster
50.0 x 26.0 x 25.0 cm
CMAG, gift of the artist 2008



Meg BUCHANAN

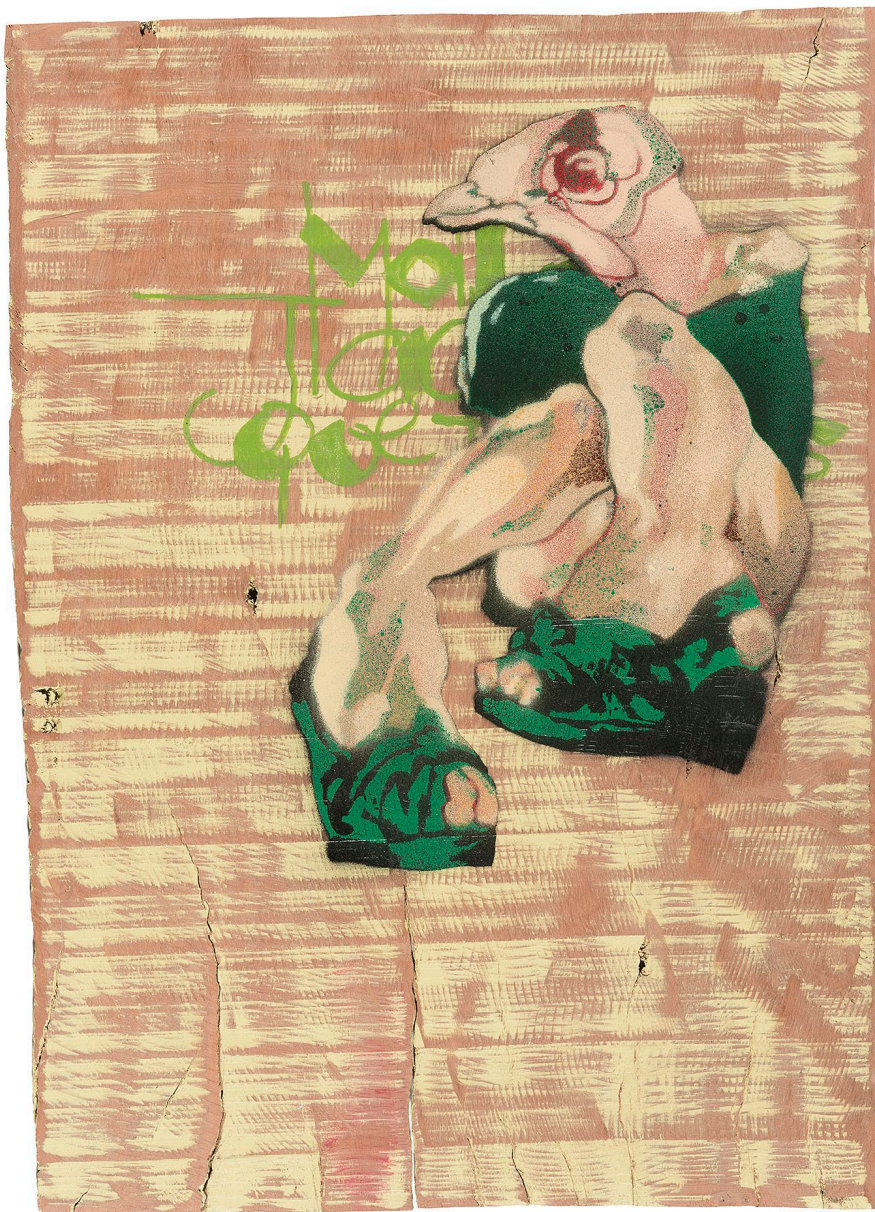
(born Australia 1949)

Fragments 1,2,3 2001

3 parts; synthetic polymer paint wash, charcoal on paper

each part: 25.0 x 25.0 cm

CMAG, purchased 2002



byrd [Daniel MAGINNITY]

(born Australia 1974)

absence of imaginative engagement 2012

enamel, synthetic polymer paint on red gum shingle

30.0 x 42.5 x 1.0 cm

CMAg, purchased 2012



Ethel CARRICK FOX
(born England 1872,
died Australia 1952)
*Colonnades of Canberra's
Civic Centre c1944*
oil on canvas board
24.5 x 35.4 cm
CMAG, purchased 2012



E. Castellanos 85

Eduardo CASTELLANOS

(born Mexico 1927, died Australia 1999)

STUDIO ONE INC.

Untitled 1985

etching/drypoint

9.8 x 14.6 cm

CMAG, gift of Studio One Inc 2000



Pierre CAVALAN

(born France 1954, Australia from 1974)

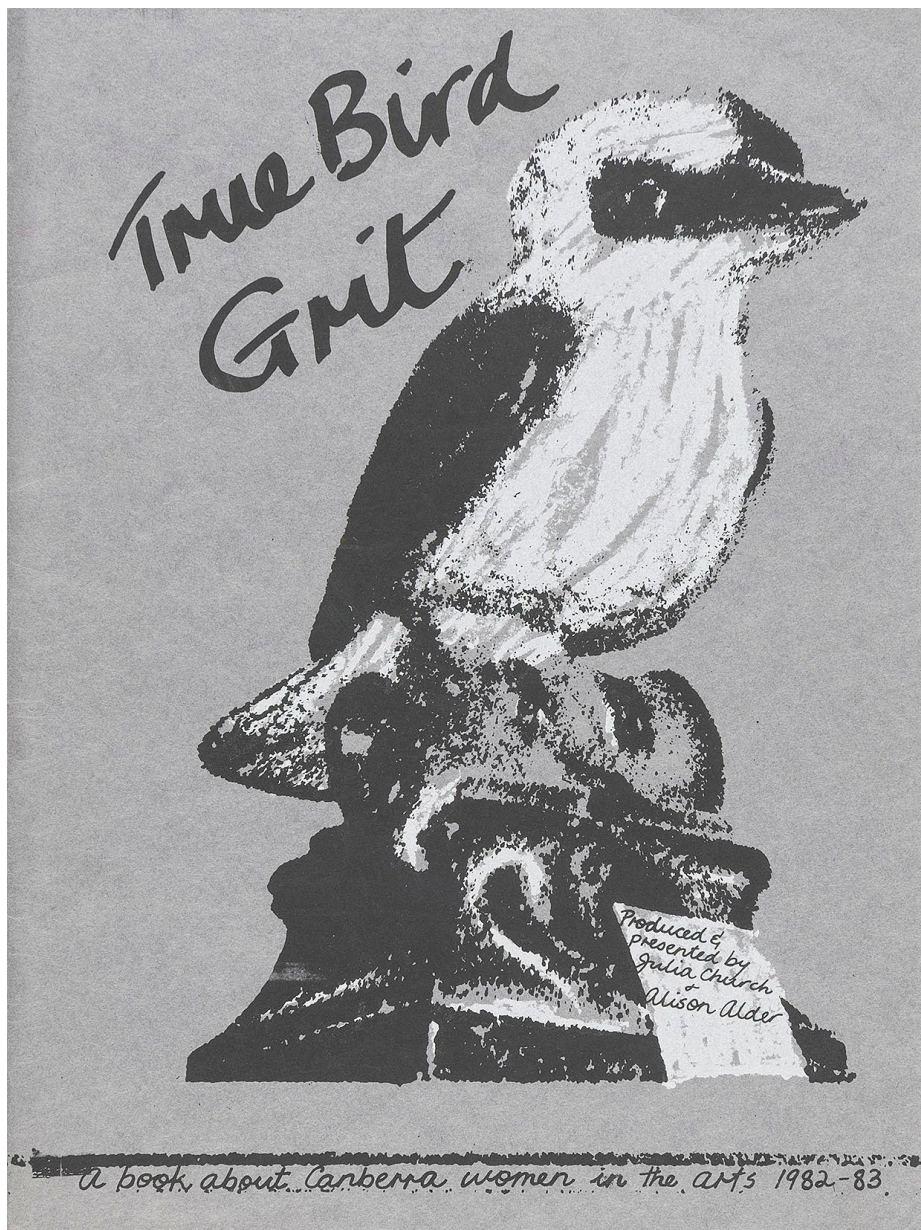
Canberra medal with heart 1996

enamelled metal badges, cut glass imitation

gem stones, metal heart bead

5.4 x 5.4 x 1.4 cm

CMAAG, purchased 1997



Julia CHURCH

(born England 1959, Australia and Italy from 1994) &
Alison ALDER (born Australia 1958)

ACME INK print cooperative

*True bird grit: a book about Canberra women in the
arts 1982-83* c1982

book, screenprint

37pp, illustrated; 50.9 x 38.0 cm

CMAG, donated through the Australian Government's
Cultural Gifts Program by Mandy Martin 1998



A. P. 'In the Sandpit' V. Clutterbuck '90

Victoria CLUTTERBUCK
(born England 1952)
STUDIO ONE INC.
In the sandpit 1990
wood engraving
7.5 x 10.2 cm
CMAG, gift of Studio One Inc 2000



Sarit COHEN

(born Israel 1967, Australia from 1981)

Three blue temples 2010

porcelain, slip cast, transparent glaze, underglaze cobalt oxide

23.5 x 12.0 cm

CMAG, purchased with funds from the Meredith Hinchliffe Fund 2010



Tony CONVEY
 (born Australia 1946) artist
 Basil HALL printer, STUDIO ONE INC.
Seek shining life 1990
 etching
 32.6 x 45.1 cm
 CMAG, gift of Studio One Inc 2000



Darkening sky 1990/1995

Olive Cotton

Olive COTTON
(Australia 1911–2003)
Darkening sky 1990/1995
gelatin silver photograph
30.0 x 35.5 cm
CMAG, purchased 1996



Greg DALY
(born Australia 1954)
Etched lustre vase 1989
stoneware, oxidised green glaze
with lustre, etched
13.5 x 20.0 cm
CMAG, gift of the artist 2006



Hamilton DARROCH

(born Australia 1972)

Resurface I 2008

2 parts; boat hook, shovel, synthetic polymer

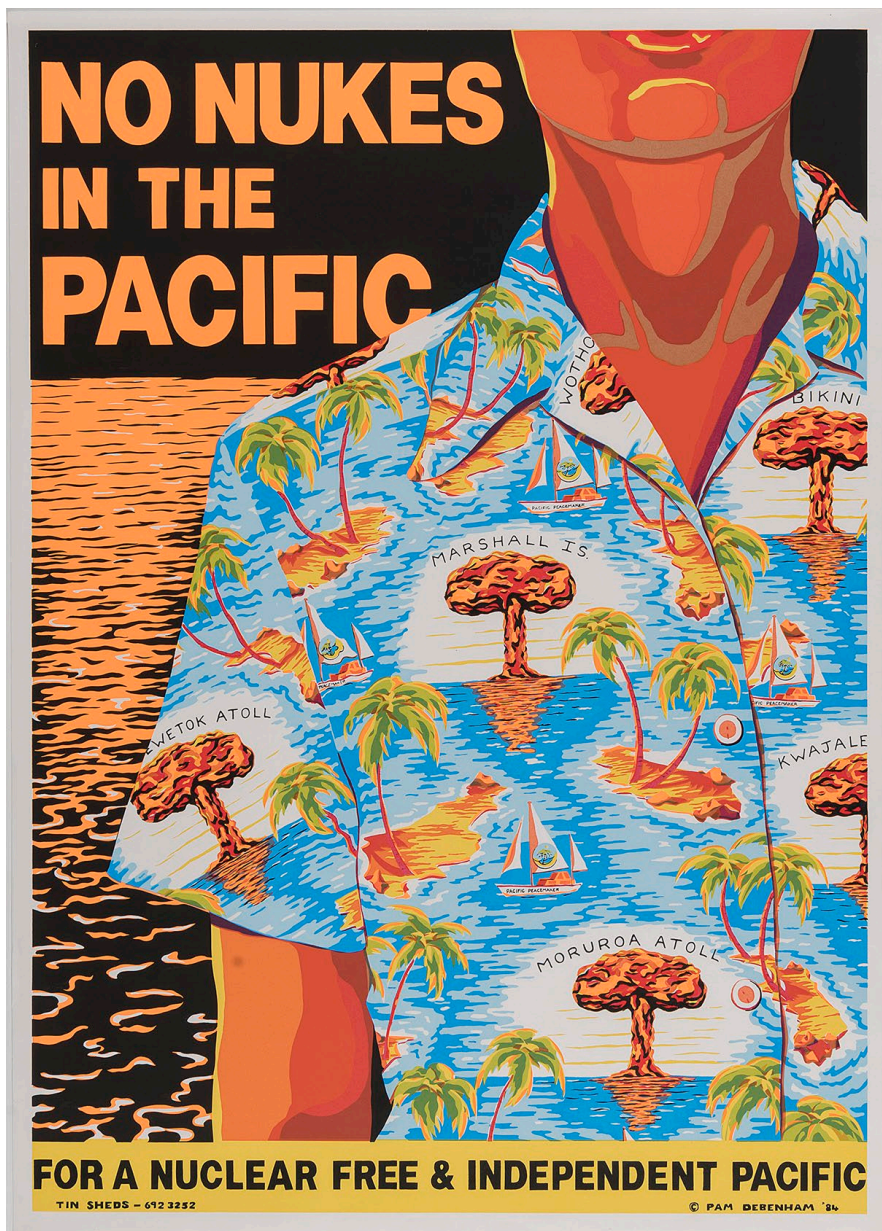
paint on wooden handles, plumb bob, string

135.0 x 50.0 (overall) x 10.0 cm

CMAA, purchased 2012



Janet DAWSON
(born Australia 1935)
Echidna, Scribble Rock 2009
pastel on paper
53.5 x 73.5 cm
CMAG, purchased 2015



Pam DEBENHAM

(born Australia 1955)

TIN SHEDS ART WORKSHOP print workshop

No nukes in the Pacific 1984

colour screenprint

90.0 x 64.9 cm

CMAG, purchased 1996



Pam DEBENHAM

(born Australia 1955)

Paradise lost 1995

screenprint on cotton (shirt)

80.0 cm (centre back length)

CMAG, purchased 1996



Janet DeBOOS
(born Australia 1948)
That hour in the morning 2005
9 parts; porcelain, wheel-thrown and
altered, clear glaze
30 x 11.5 cm overall
CMAG, donated by Meredith Hinchliffe 2008



Mariana DEL CASTILLO

(born Ecuador 1966, Australia from 1972)

Mother's dialogue 2010

4 parts; woollen blanket, nails, rubber, funnel, cutting disc, latex, glass, vinyl, thread, plastic beads, textiles, fire hose, religious medallions, AFL football, toy plane, blue cut tracks, pastry slicer, paint, on particle board
72.6 (longest) x 196.1 (overall, no spaces) x 29.0 cm (deepest)
CMAG, purchased 2016



Lyndy DELIAN

(born Australia 1953, Wathaurong people, Victoria)

Turtle shell – connections 2011

blown glass, sandblasted, etched and engraved

8.0 x 30.0 x 30.0 cm

CMAG, purchased with funds from the Meredith Hinchliffe Fund 2012



eX DE MEDICI
(born Australia 1959)
*Terra (application of theory:
decloaking the apparatus)* 2005
watercolour
107.0 x 113.0 cm
CMAG, purchased 2010



Nadège DESGENÉTEZ

(born France 1973,
Australia from 2005)

Corporeal, ground 2014

blown and sculpted glass,
mirrored, carved, hand-sanded
31.0 x 45.0 x 29.0 cm

CMAG, purchased with funds from
the Meredith Hinchliffe Fund 2015



Mei DOUGLAS

(born Australia 1978)

Divide 2002

blown, cold worked and engraved glass

40.0 cm [diameter]

CMAG, purchased with funds donated
by Westpac Banking Corporation, 2002



Janenne EATON

(born Australia 1950)

Creek runner – Hume and Barton Highways 2008-09

5 parts; enamel on canvas

overall: 168.0 x 375.0 cm

CMAG, donated through the Australian Government's Cultural Gifts Program 2011



Ben EDOLS (born Australia 1967) & Kathy ELLIOTT
(born Australia 1964)
Red/amber skein vessel 2006
blown and cut glass
50.0 x 27.0 x 9.0 cm
CMAG, purchased with funds from
the Meredith Hinchliffe Fund 2016



Anna EGGERT

(born Croatia 1952,
Australia from 1962)

Margarita 2005

stainless steel mesh, enamel paint

82.0 x 77.0 x 54.0 cm

CMAG, purchased with funds from
the Meredith Hinchliffe Fund 2005



Denise FERRIS

(born Australia 1953)

Untitled (grit man) 2005

pigment print on Softex Des paper

32.6 x 43.6 cm

CMAG, gift of the artist 2008



Dianne FIRTH

(born Australia 1945)

Deluge 2011

viscose felt, commercial cotton, polyester
thread; whole cloth reverse applique,
machine quilted

138.0 x 71.0 cm 0.5 cm

CMAG, purchased with funds from the
Meredith Hinchliffe Fund 2012



Dianne FOGWELL
(born Australia 1958)
Encounter 2017
linocut
99.0 x 78.5 cm
CMAG, purchased 2017



Robert FOSTER

(Australia 1962-2016) designer
FINK AND CO (commenced 1993) manufacturer

Beakers 1995

2 parts; anodised aluminium

10.0 x 7.0 x 7.6 (diameter) cm

CMAG, purchased 1997

Cocktail shaker 1998

3 parts; anodised aluminium,
machined aluminium

25.0 x 8.0 (diameter) cm

CMAG, purchased 1999



w/p

Exhibition Fatigue

Franklin 94

Annie FRANKLIN

(born Australia 1962) artist

Barbara McCONCHIE printer, STUDIO ONE INC.

Exhibition fatigue 1994

etching/aquatint

12.0 x 20.9 cm

CMAG, gift of Studio One Inc 2000



Cathy FRANZI
(born Australia 1963)
Crimson bottlebrush 2015
porcelain, wheel-thrown and altered,
engobe, sgraffito, glazed interior
15.0 x 30.0 x 11.0 cm
CMAG, purchased with funds from
the Meredith Hinchliffe Fund 2015



Rosalie GASCOIGNE

(born New Zealand 1917, died Australia 1999; Australia from 1943) artist

Basil HALL printer, STUDIO ONE INC.

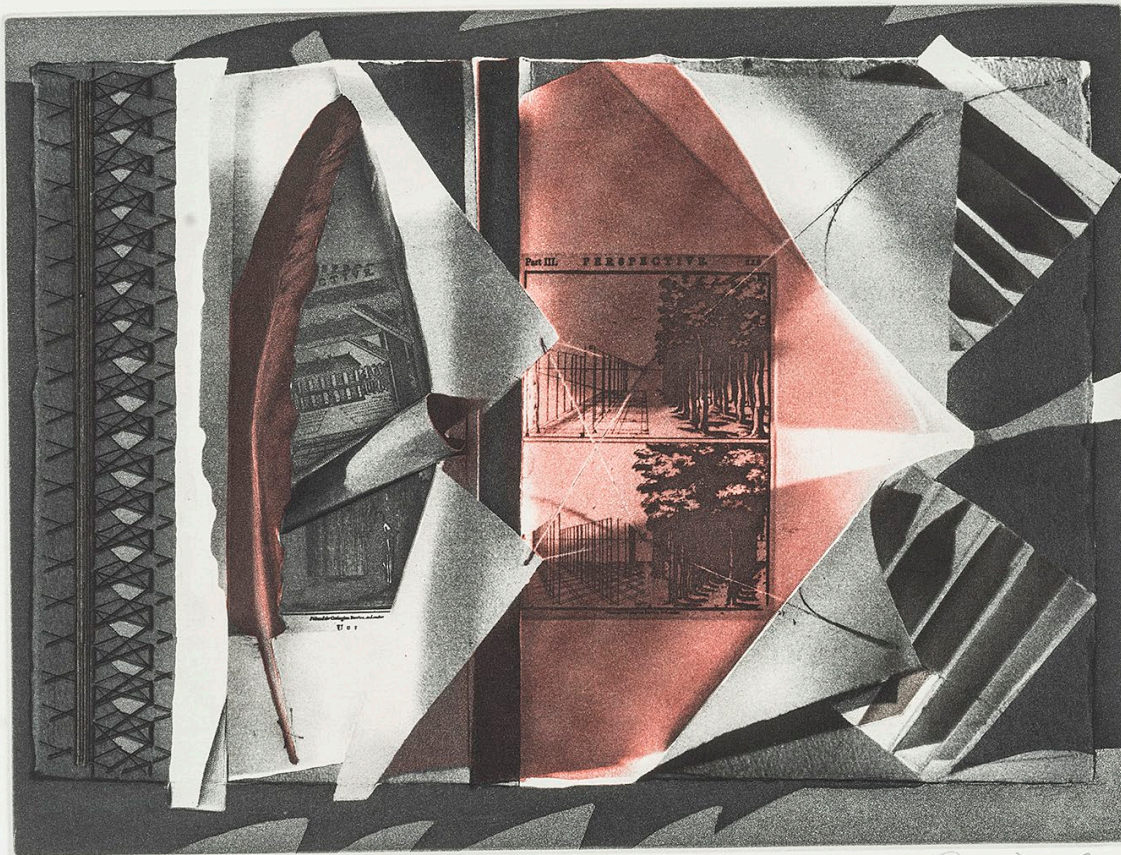
Louise MAURER printer, STUDIO ONE INC.

Across town 1991

screenprint

57.4 x 76.7 cm

CMAG, gift of Studio One Inc 2000



W/P. 'Flying the Coop' State 2.

Helen Geier 94

Helen GEIER
 (born Australia 1946) artist
 Basil HALL printer, STUDIO ONE INC.
Flying the coop 1994
 etching, aquatint
 40.0 x 44.0 cm
 CMAG, gift of Studio One Inc 2000



Ninon GEIER

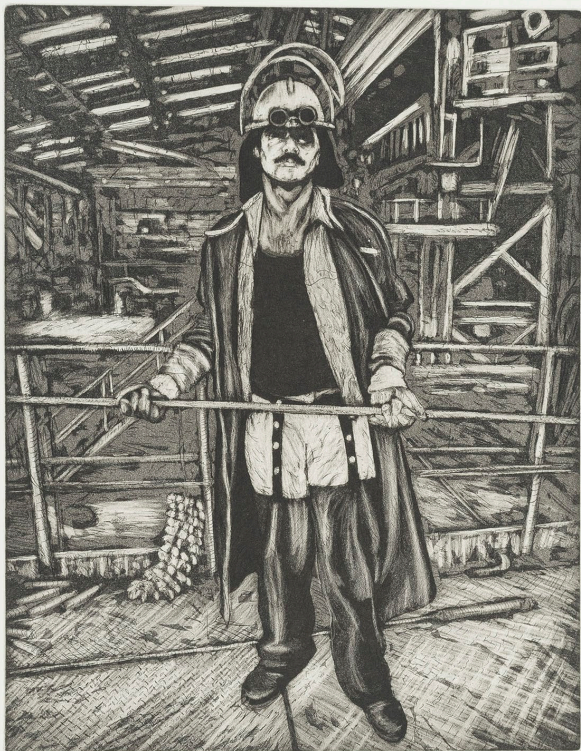
(born Switzerland 1923, died Australia 2015; Australia from 1957)

Manning Clark c1985

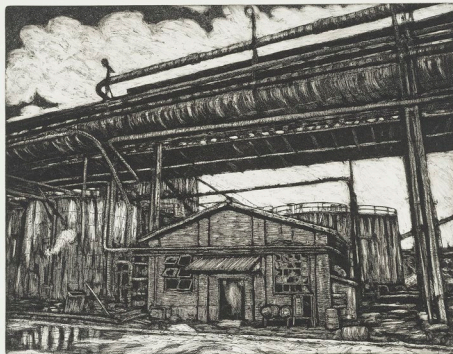
plaster

42.0 x 18.0 x 27.0 cm

CMAG, gift of the family of Ninon Geier, 2016



1991 Lancer BOS 1991 George Gittoes



George GITTOES

(born Australia 1949) artist

Basil HALL printer, STUDIO ONE INC.

Lancer BOS 1991

etching, aquatint

31.4 x 24.4 cm

CMAG, gift of Studio One Inc 2000

A man's world 1991

etching, aquatint

24.4 x 31.5 cm

CMAG, gift of Studio One Inc 2000

Our house 1991

etching, aquatint

24.4 x 31.5 cm

CMAG, gift of Studio One Inc 2000



Garry GREENWOOD

(born England 1943, died Australia 2005;

Australia from 1962)

Untitled (leather bowl) 1979

hand-crafted, wet-formed, moulded leather

13.0 x 27.5 [diameter] cm

CMAG, gift of Joan Buckie 2015



Elioth GRUNER

(born New Zealand 1882, died Australia
1939; Australia from 1883)

Landscape 1929

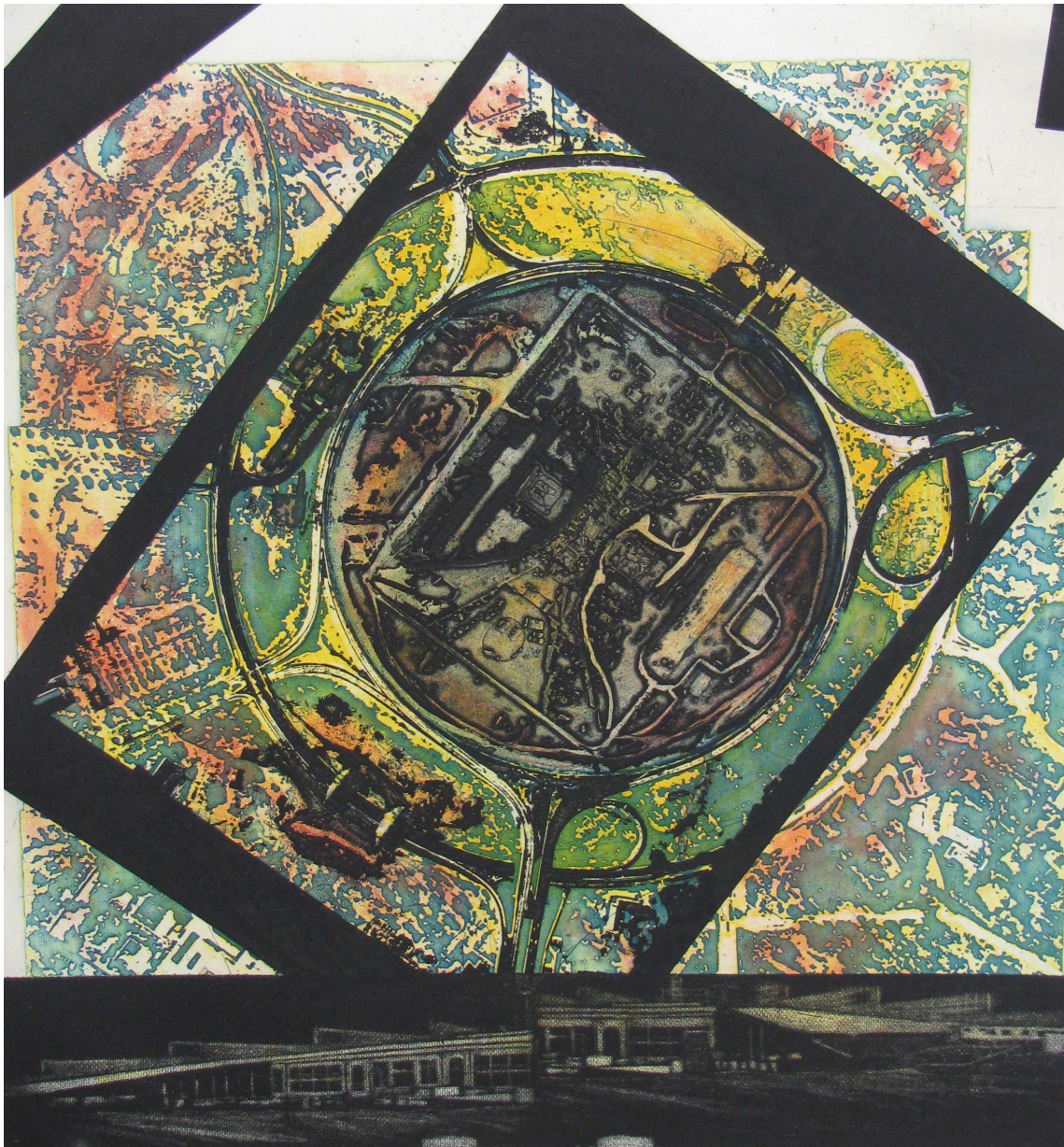
oil on board

30.2 x 40.6 cm

CMAG, purchased 2002



Marie HAGERTY
(born Australia 1964)
Monarch II 2008
oil on canvas
157.0 x 137.0 cm
CMAG, purchased 2008



Basil HALL
(born Australia 1954)
Target 88 1986
colour etching
47.4 x 43.6 cm
CMAG, purchased 2010



310 URIARRA SUMMER I

Hamilton 1987

William Stenhouse HAMILTON

(Australia 1919-2016)

Uriarra summer I 1987

screenprint

35.7 x 24.6 cm

CMAG, donated through the Australian
Government's Cultural Gifts Program in memory
of Ruth H Prowse 2011



Treahna HAMM

(born Australia 1965, Yorta Yorta people, Victoria) artist

Barbara McCONCHIE printer, STUDIO ONE INC.

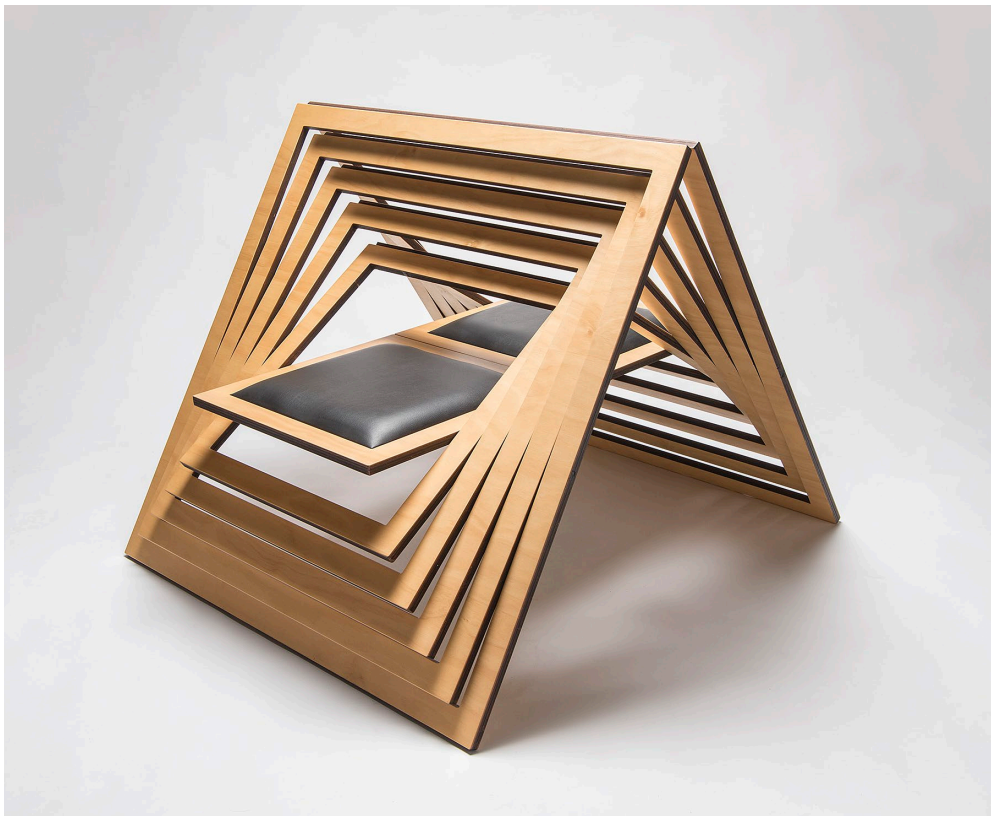
Toni BAILEY printer, STUDIO ONE INC.

Kangaroo dreaming 1997

etching

37.0 x 34.5 cm

CMAG, gift of Studio One Inc 2000



Matthew HARDING

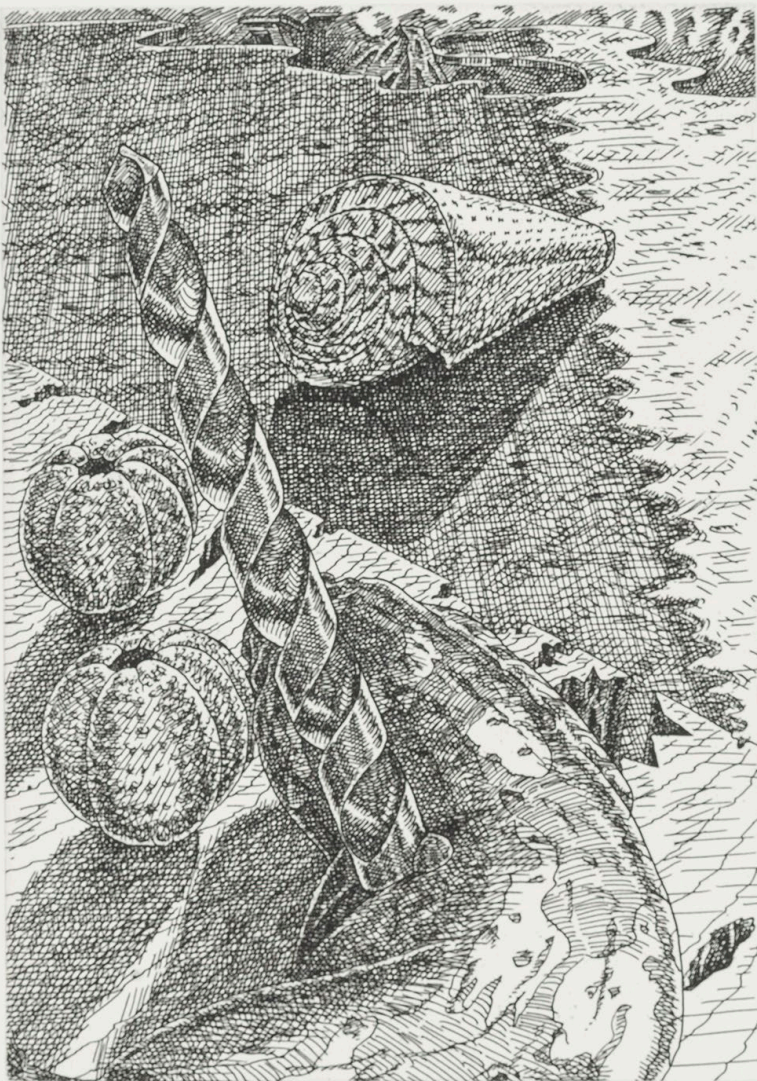
(Australia 1964-2018)

Dialogue 2001

laser-cut hoop pine ply, vinyl upholstery, brass hinges

85.0 x 100.5 x 108.0 cm

CMAG, purchased 2002



Bernard HARDY

(born Australia 1941) artist

Basil HALL printer, STUDIO ONE INC.

Shell and drill

etching

29.2 x 20.5 cm

CMAG, gift of Studio One Inc 2000



Patsy HELY

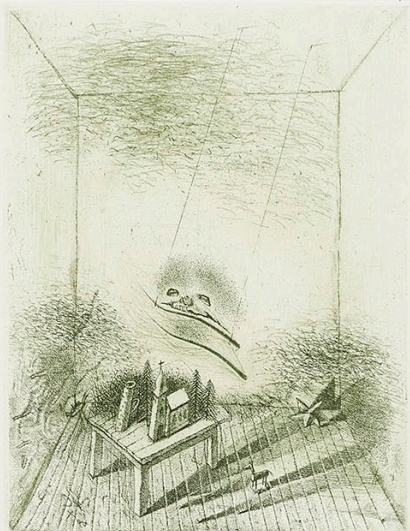
(born Australia 1946)

Jug: school anniversary, Queanbeyan 2009

porcelain, hand-painted, oxide and
underglaze decoration

14.9 x 11.6 x 8.2 cm

CMAg, purchased with funds from the
Meredith Hinchliffe Fund 2010



Petr HEREL

(born Czechoslovakia 1943, Australia from 1973,
France 1976-78, 1985-86)

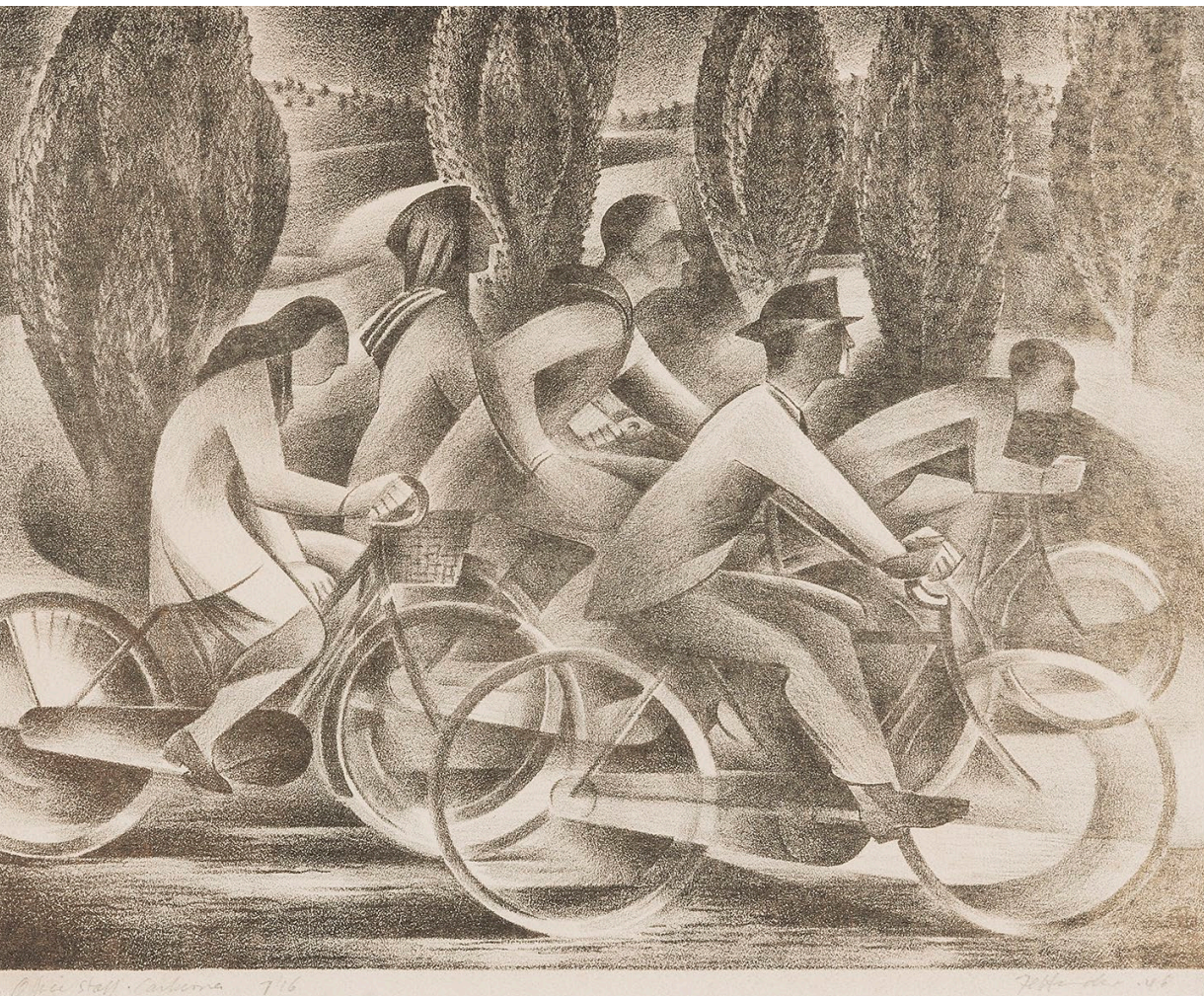
STUDIO ONE INC.

Untitled

etching

39.5 x 31.9 cm

CMAG, gift of Studio One Inc 2000



Frank HINDER

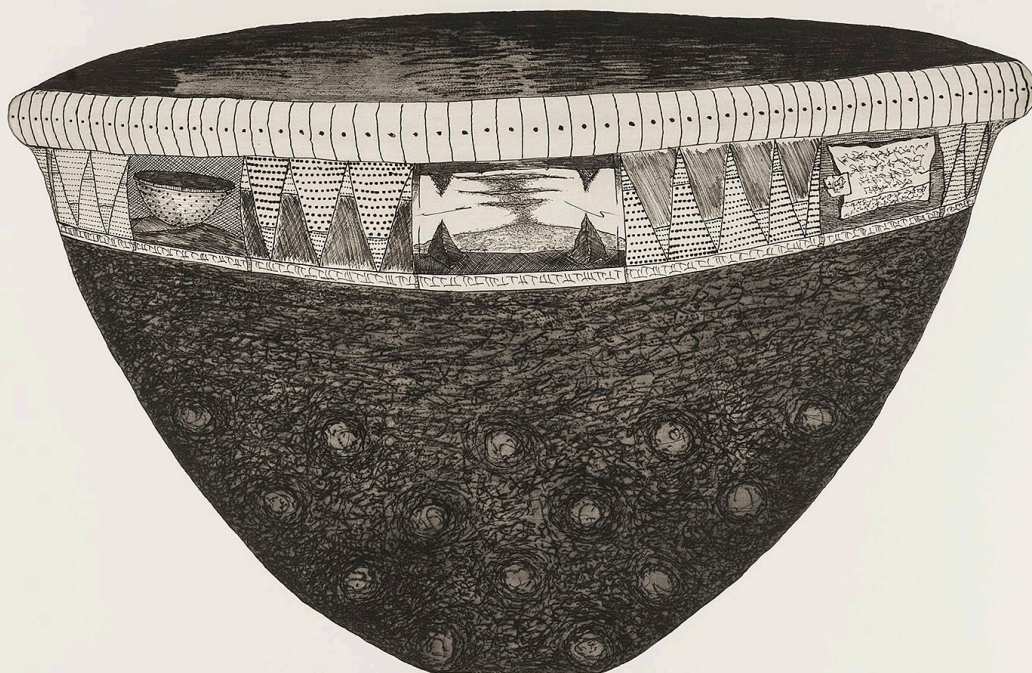
(Australia 1906-1992; United States of America 1927-34)

Office staff, Canberra 1942

lithograph

20.3 x 25.8 cm

CMAG, donated through the Australian Government's Cultural Gifts Program by Rex & Caroline Stevenson 2018



Brian HIRST

(born Australia 1956) artist
Barbara McCONCHIE printer, STUDIO ONE INC.
Offering bowl and shadow 1997
etching [from glass etching plate]
54.5 x 84.6 cm
CMAG, gift of Studio One Inc 2000



Steven HOLLAND

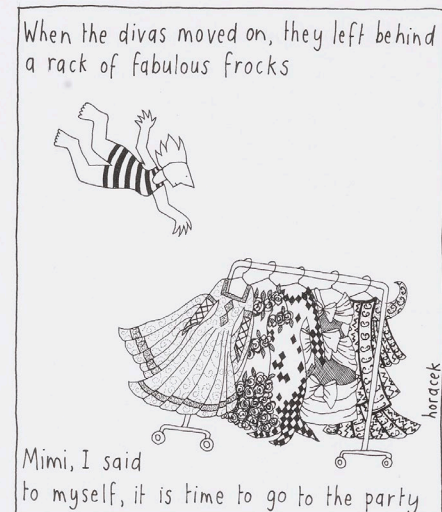
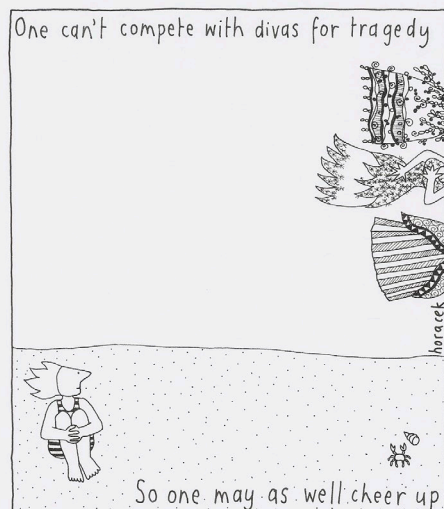
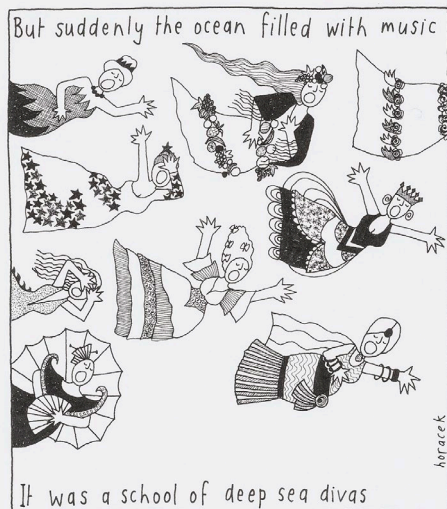
(born Australia 1960)

Monaro 2001

2 parts; gouache on sheep skulls, on welded fencing wire bracket

40.0 x 40.0 x 15.0 cm (each part)

CMAA, purchased with funds from the Meredith Hinchliffe Fund 2009



Judy HORACEK

(born Australia 1961)

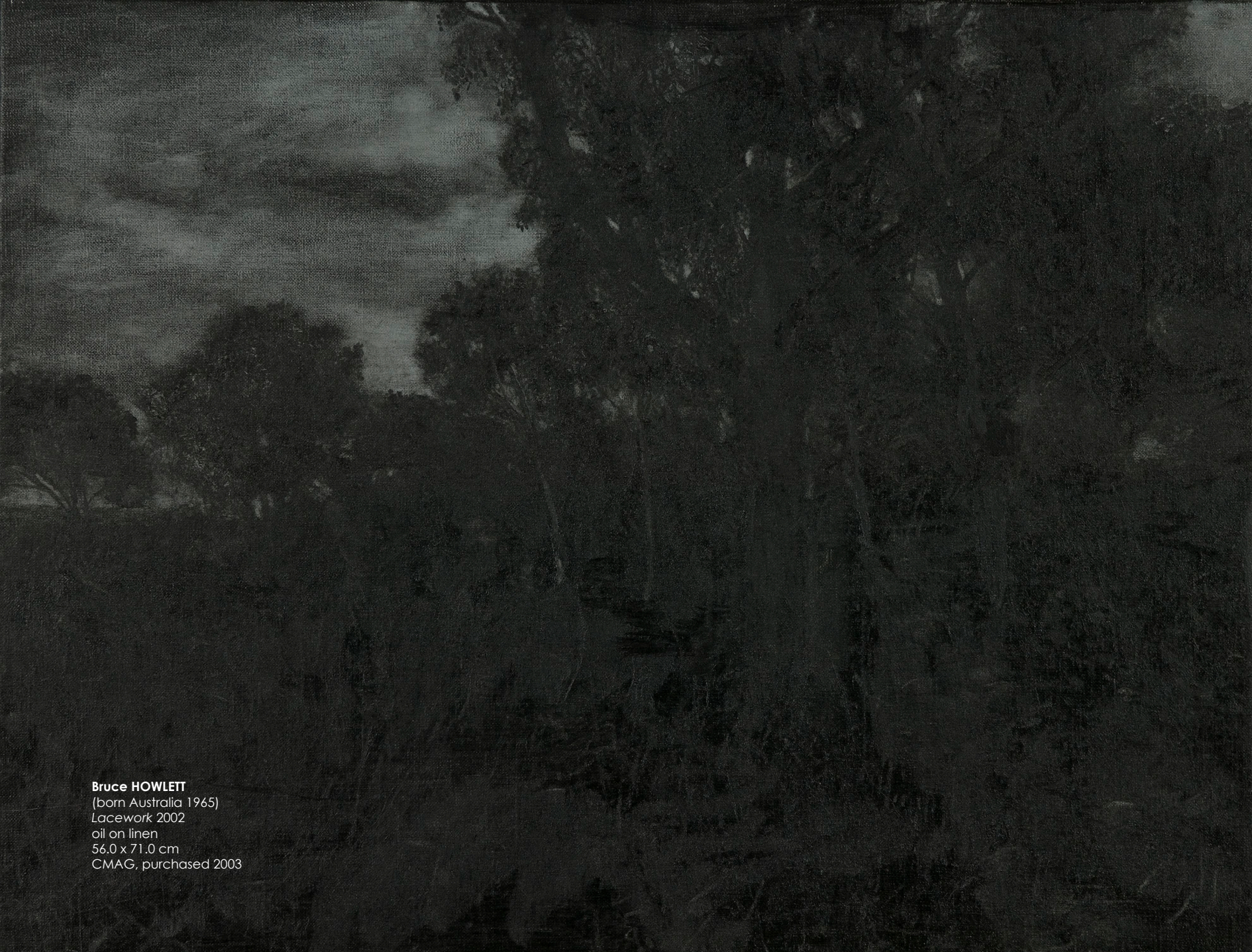
(But suddenly the ocean filled with music...); (One can't compete with
divas for tragedy...); (When the divas moved on...)

1996/97
from The divas series

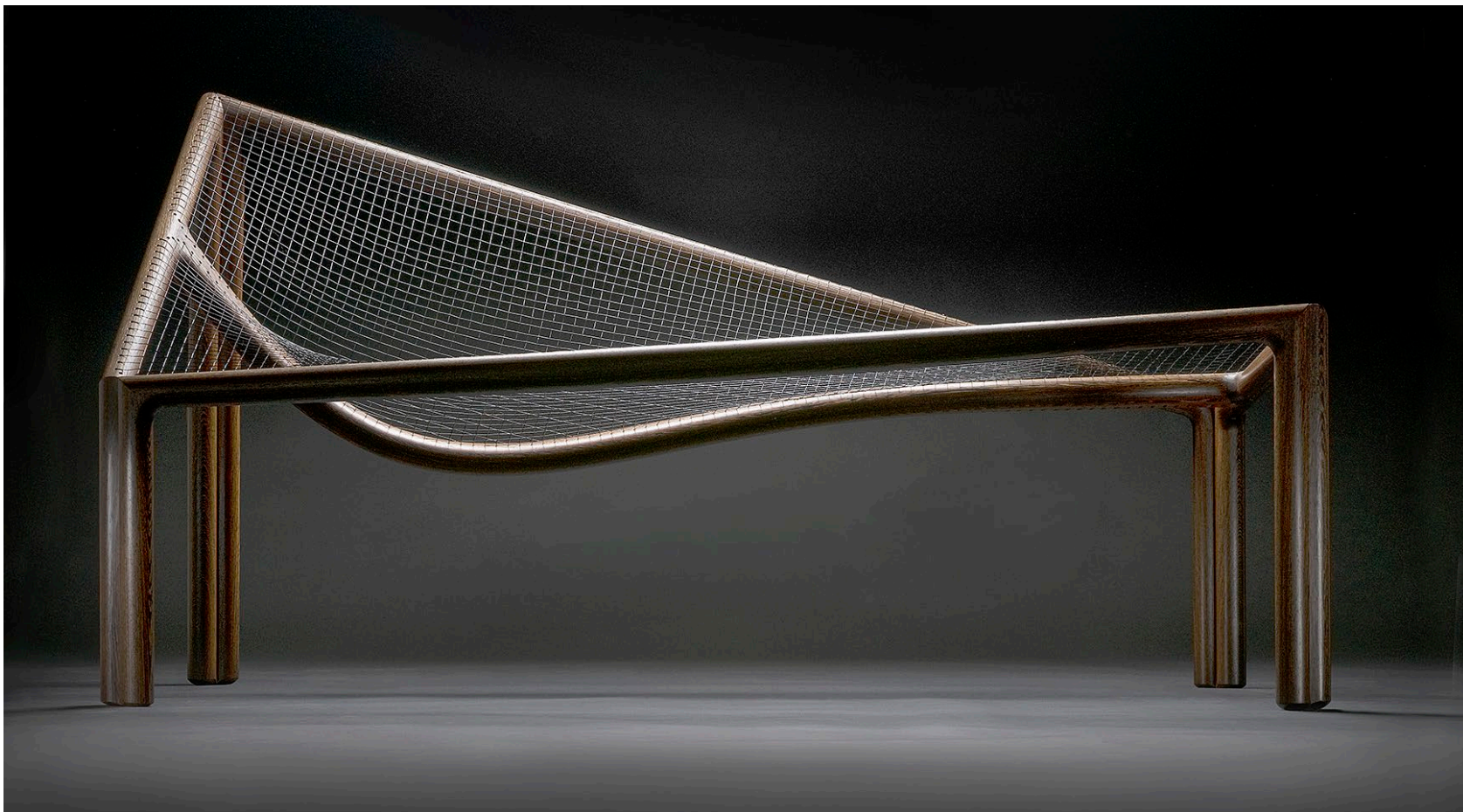
pen and ink

15.0 x 13.1 cm (each)

CMAG, purchased 2000



Bruce HOWLETT
(born Australia 1965)
Lacework 2002
oil on linen
56.0 x 71.0 cm
CMAG, purchased 2003



George INGHAM

(born Pakistan 1940, died Australia 2003; Australia from 1982)

Chaise longue 1991

laminated and solid wenge, woven shark line

92.0 x 150.0 x 90.0 cm

CMAG, gift of Pru Ingham 2014



Robert INGPEN
(born Australia 1936)
Churchill House, Canberra 1972
ink, watercolour
29.0 x 37.0 cm
CMAG, purchased 2016



Alison JACKSON

(born Australia 1986)

10 vessels 10 days 2015

fine silver; fine silver, oxidised; copper, heat treated; copper, oxidised; steel binding wire

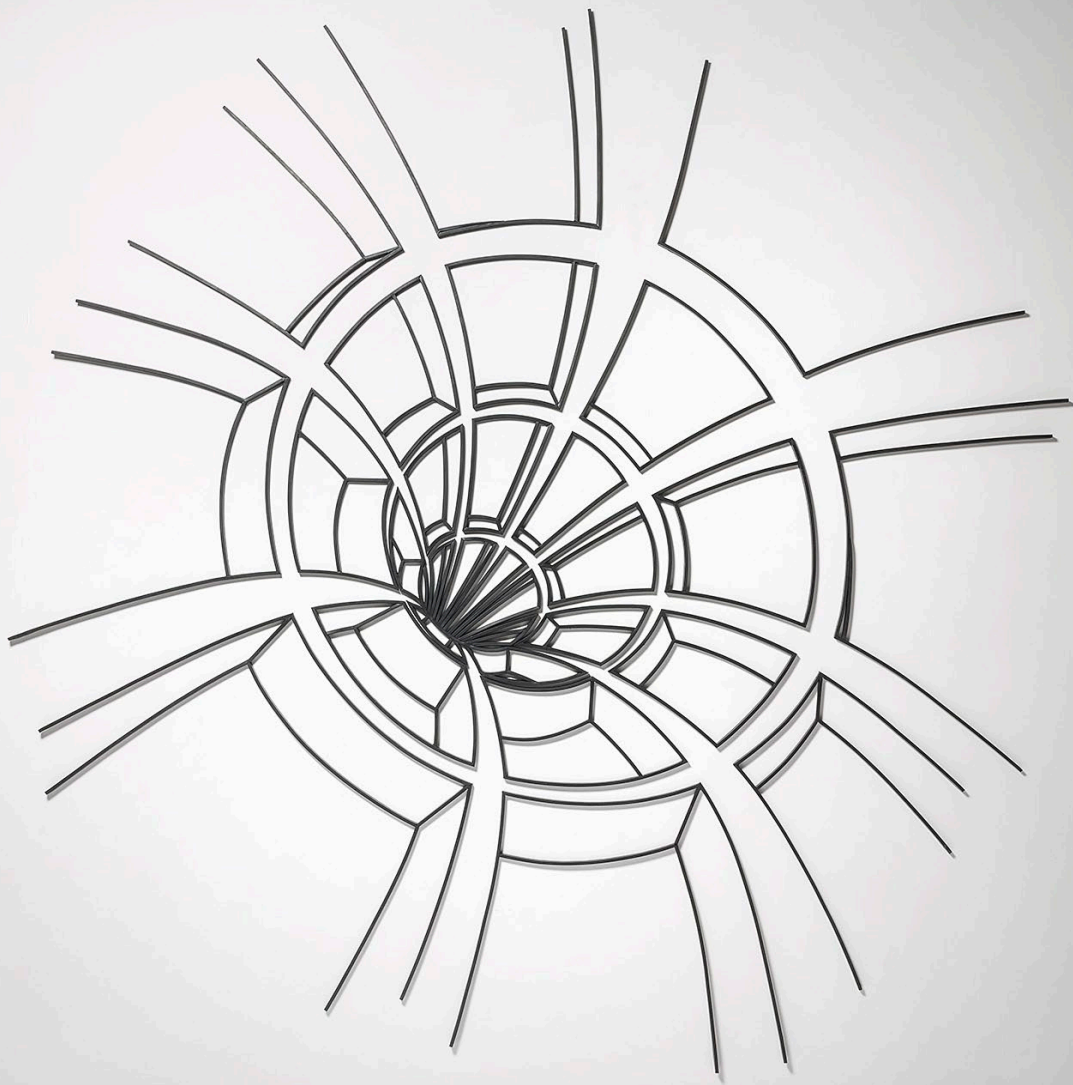
dimensions variable

CMAG, purchased with funds from the Meredith Hinchliffe Fund 2015



Abie JANGALA

(Australia 1919-2002, Warlpiri people,
Northern Territory) artist
Paul PEISLEY printer, STUDIO ONE INC.
Two women dreaming 1997
screenprint
27.0 x 31.0 cm
CMAG, gift of Studio One Inc 2000



David JENSZ
(born Australia 1957)
Parallel horizons: drawing 2001
steel, rubber
300.0 x 300.0 x 1.0 cm
CMAG, donated through the
Australian Government's Cultural Gifts
Program by the artist 2007



Martyn JOLLY

(born Australia 1959)

*Nineteen sixty-three: news
and information 1997*

9 parts; inkjet prints, from an original
installation of 100 parts,
digitally cropped from black and white
photographs taken for the Australian News
and Information Bureau in 1963; each part:
20.0 x 25.0 cm

CMAG, donated through the Australian
Government's Cultural Gifts Program 2012



Ian JONES

(born United Kingdom 1953,
Australia from 1955)

Granite clay jar #1 2015

stoneware, anagama (wood-fired),
natural ash glaze, local clay

27.0 x 13.4 cm

CMAG, gift of the artist 2015



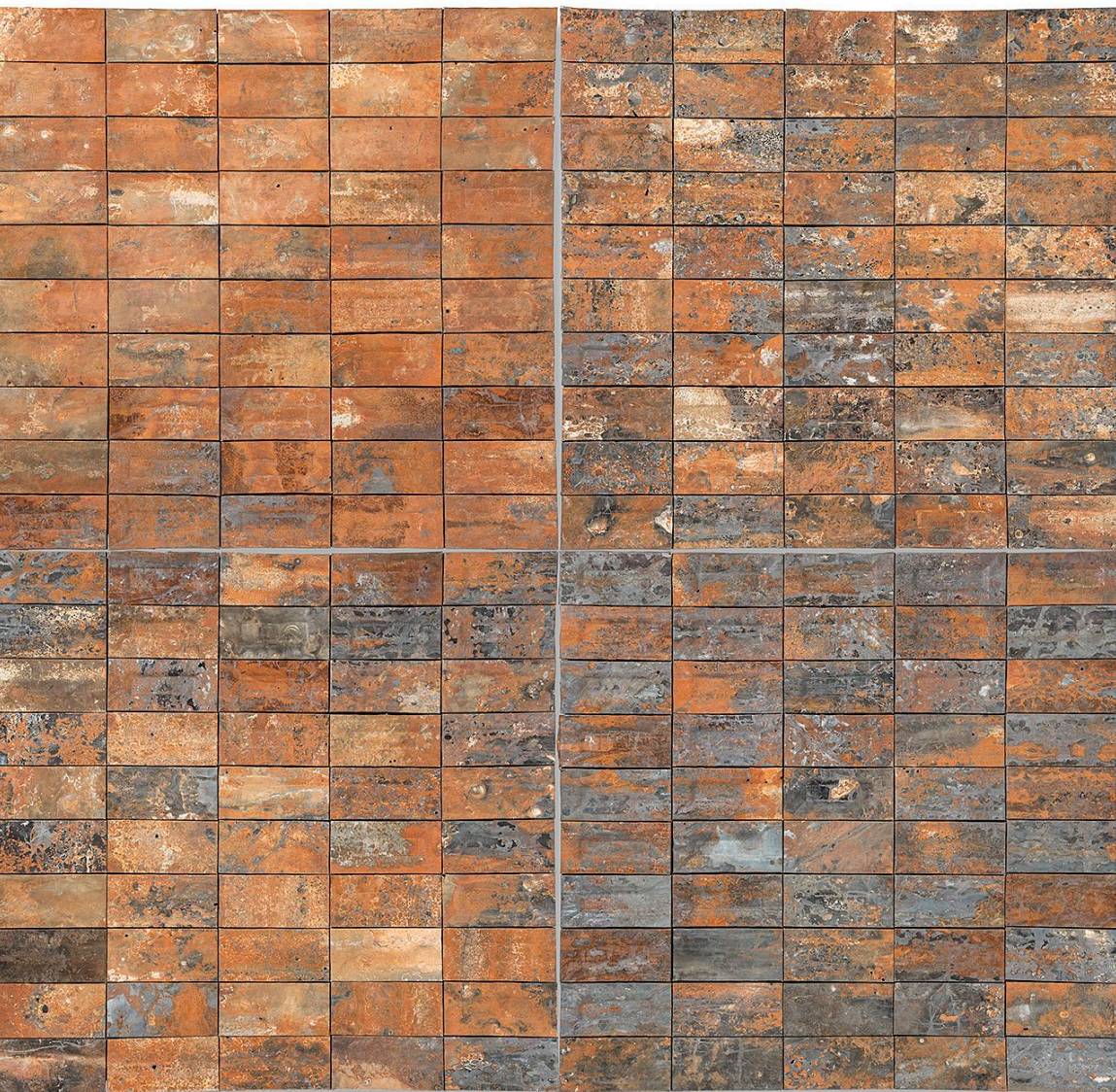
W.P.

Marlene Juli 1996

Marlene JULI
(born Australia 1975, Gija people,
Western Australia) artist
Jenny ALLEN printer, STUDIO ONE INC.
Bungle bungle 1996
linocut
16.7 x 23.4 cm
CMAG, gift of Studio One Inc 2000



Matt KELSO
(born Australia 1952)
'Sharrow', Bungendore NSW 1995
from *A picture window series*
C-type colour photograph
50.5 x 40.5 cm
CMAG, purchased 2004



Ingo KLEINERT

(born Germany 1941, Australia from 1949)

Divided land I 1998

galvanised iron

225.0 x 234.0 x 15.0 cm

CMAG, purchased 1999



Emily Kam KNGWARRAY

(Australia 1908/12-1996, Anmatyer people,
Northern Territory) artist

Heather BURNES printer, STUDIO ONE INC.

Untitled 1994

etching

49.4 x 39.4 cm

CMAG, gift of Studio One Inc 2000



Elisabeth KRUGER

(born New Caledonia 1955,
Australia from 1956)

Get knotted 1983

lithograph

37.0 x 34.5 cm

CMAG, donated through the Australian
Government's Cultural Gifts Program in
memory of Ruth H Prowse 2011

33/50 'Get knotted' Elisabeth Kruger '83



Johannes KUHNEN

(born Germany 1952, Australia from 1981)

Box 1981

anodised aluminium, sterling silver

4.5 x 10.0 x 5.2 cm

CMAG, purchased 2003

Box (pivoting lid) 1982

anodised aluminium, sterling silver

4.0 x 10.0 x 5.0mm

CMAG, purchased 2003



Julian LAFFAN

(born Australia 1974)

City of the future 2010

4 parts; Civic arches; River in flood;

Roman forecourt – North Building;

Sydney/ Melbourne Buildings;

inked woodcut on plywood

l-r: 51.5 x 15.0 x 2.0 cm; 41.0 x 15.0 x 2.0

cm; 58.0 x 17.5 x 1.5 cm

CMAG, purchased 2011



Waratah LAHY
(born Australia 1974)
Double stair 2015
oil on canvas
140.0 x 110.0 cm
CMAG, purchased 2016



Richard LARTER

(born England 1929, died Australia 2014;
Australia from 1962)

Near Yass 1989

synthetic polymer paint on canvas

CMAG, purchased 1997



Henri LE GRAND

(born The Netherlands 1921, died 1978, Australia from 1950)

Bowl c. mid 1960s

stoneware, wheel-thrown and fluted, glazed

11.5 x 24.5 cm

CMAG, gift of Gabrielle Watt 2013



Michael LE GRAND
(born Australia 1951)
Eclipse 2010
painted steel
66.0 x 86.0 x 59.0 cm
CMAG, purchased with funds from
the Meredith Hinchliffe Fund 2011



Jon LEWIS
(born USA 1950, Australia from 1951)
Echidna 2011
from the From the ranges series
digital print on archival paper
80.0 x 100.0 cm
CMAG, purchased 2012



Marcia LOCHHEAD
(born Australia 1970)
Captain's Flat pool 2004
from the *Mirror* series
C-type print
84.0 x 101.5 cm
CMAG, purchased 2005



VIEW OF LAKE GEORGE,
New South Wales,
from the North East

London, Published March 1, 1825, by J. Soutter, 75, St. Paul's Church Yard.

Joseph LYCETT
 (England 1774-1828; Australia 1814-22)
 View of Lake George, New South
 Wales, from the north east 1825
 hand-coloured aquatint
 23.1 x 32.6 cm
 CMAG, purchased 2014



w/p "Putting out the cat" Ron McBurnie '90

Ron McBurnie
 (born Australia 1957) artist
 Basil HALL printer, STUDIO ONE INC.
Putting out the cat 1990
 etching
 14.4 x 16.5 cm
 CMAG, gift of Studio One Inc 2000



Alasdair McGREGOR

(born Australia 1954) artist

Theo TREMBLAY printer, STUDIO ONE INC.

Fringing the cay, Heron Island 1996

lithograph

44.4 x 61.5 cm

CMAG, gift of Studio One Inc 2000



Anita McIntyre

(born Australia 1942)

China cup #4 and China cup #10 2010

slip cast porcelain paper clay, tissue
paper transfer, decals, clear glaze, stains
10.5 x 5.0, 9.5 x 4.5 cm

CMAg, purchased with funds from
the Meredith Hinchliffe Fund 2010



Ann McMAHON

(born Australia 1959)

Blind shark 2010

recycled plastic bags, wire, cable ties

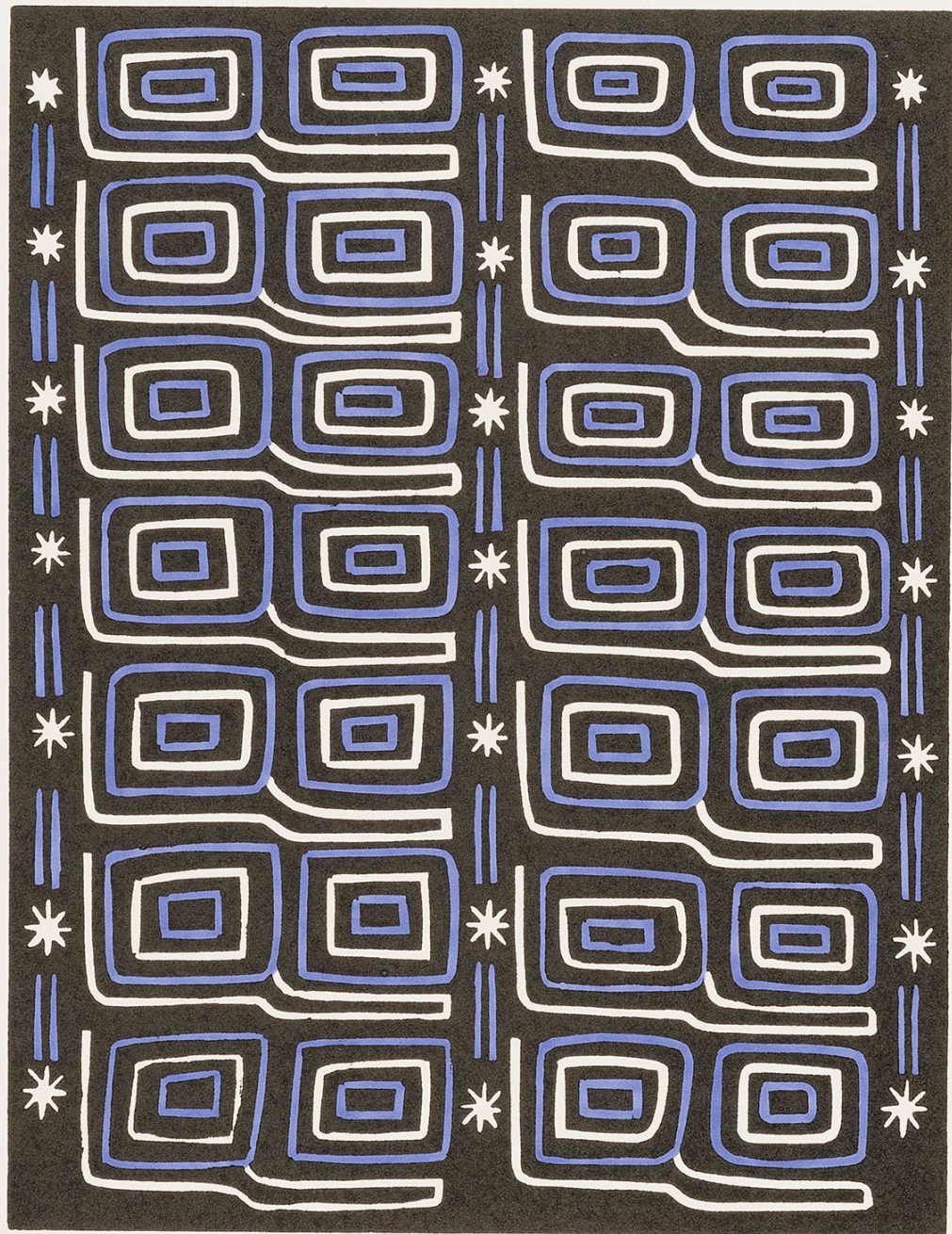
(wire frame manufactured by Rohan Thinsmith)

37.0 x 110.0 x 46.0 cm

CMAG, purchased with funds from the Meredith Hinchliffe Fund 2012



Marie McMAHON
(born Australia 1953) artist
Jacqui DRIVER printer, STUDIO ONE INC.
Jan HOGAN printer, STUDIO ONE INC.
Edible fruit 1992
lithograph
25.5 x 35.5 cm
CMAG, gift of Studio One Inc 2000



2/25

The Blue Print

Liz McNiven 1996

Liz McNIVEN

(born Australia 1963, Badyidi (Bujjiti) people,
Southwest Queensland) artist

Bob RUSSELL PRINTER, STUDIO ONE INC.

The blue print 1996

hand-coloured linocut, fibre-tip pen

30.0 x 23.0 cm

CMAG, purchased 1996



Kim MAHOOD

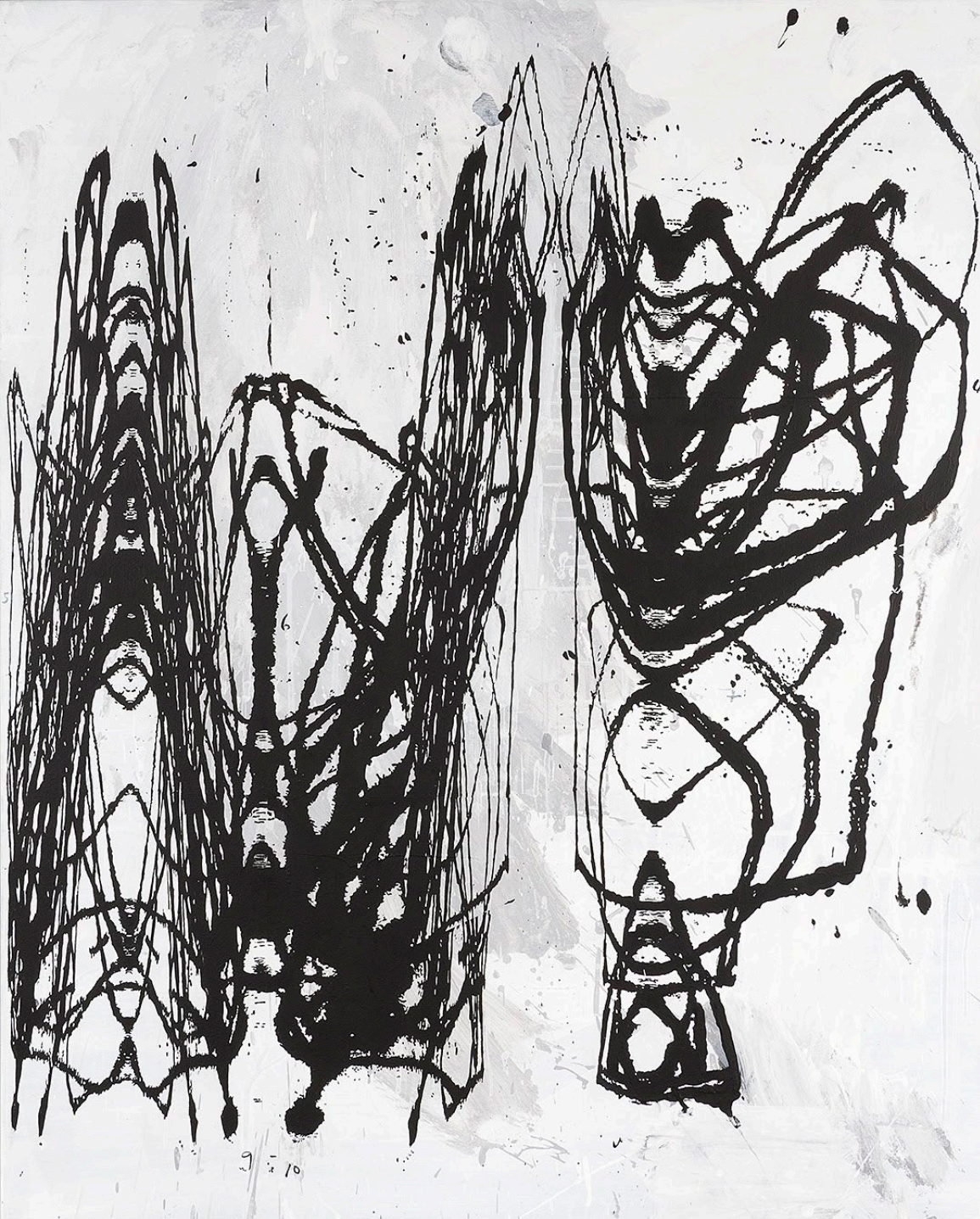
(born Australia 1953)

Barbed wire sheep 1996

3 parts; barbed wire, wire, galvanised tin + poem

80.0 x 35.0 x 102.0 cm; 65.0 x 42.0 x 117.0 cm; 50.0 x 23.0 x 65.0

CMAG purchased 2002



Peter MALONEY

(born Australia 1953)

From under the floorboards 2001

synthetic polymer paint on canvas

128.0 x 103 cm

CMAg, purchased 1997



WIP

Fountain at Manuka Pool

(M) 1999

Louise MARSH

Jacqui DRIVER printer, STUDIO ONE INC.

Fountain at Manuka Pool 1999

lithograph

37.2 x 29.6 cm

CMAG, gift of Studio One Inc 2000



Mandy MARTIN

(born Australia 1952)

Break 1988

oil on linen

280.0 x 465.0 cm

CMAG, donated through the Australian Government's Cultural Gifts Program by the artist 1997



Arone MEEKS

(born Australia 1957, Kokoimudji people, Queensland) artist
 Theo TREMBLAY printer, STUDIO ONE INC.

Goanna 1994; Kangaroo 1994

linocut

30.0 x 14.1 cm; 29.9 x 14.8 cm

CMAG, gift of Studio One Inc 2000



Danie MELLOR

(born Australia 1971,
Mamu/Ngagen/Ngajan peoples, Queensland)

*A new geography (of dreams the heart
which cast its own)* 2006

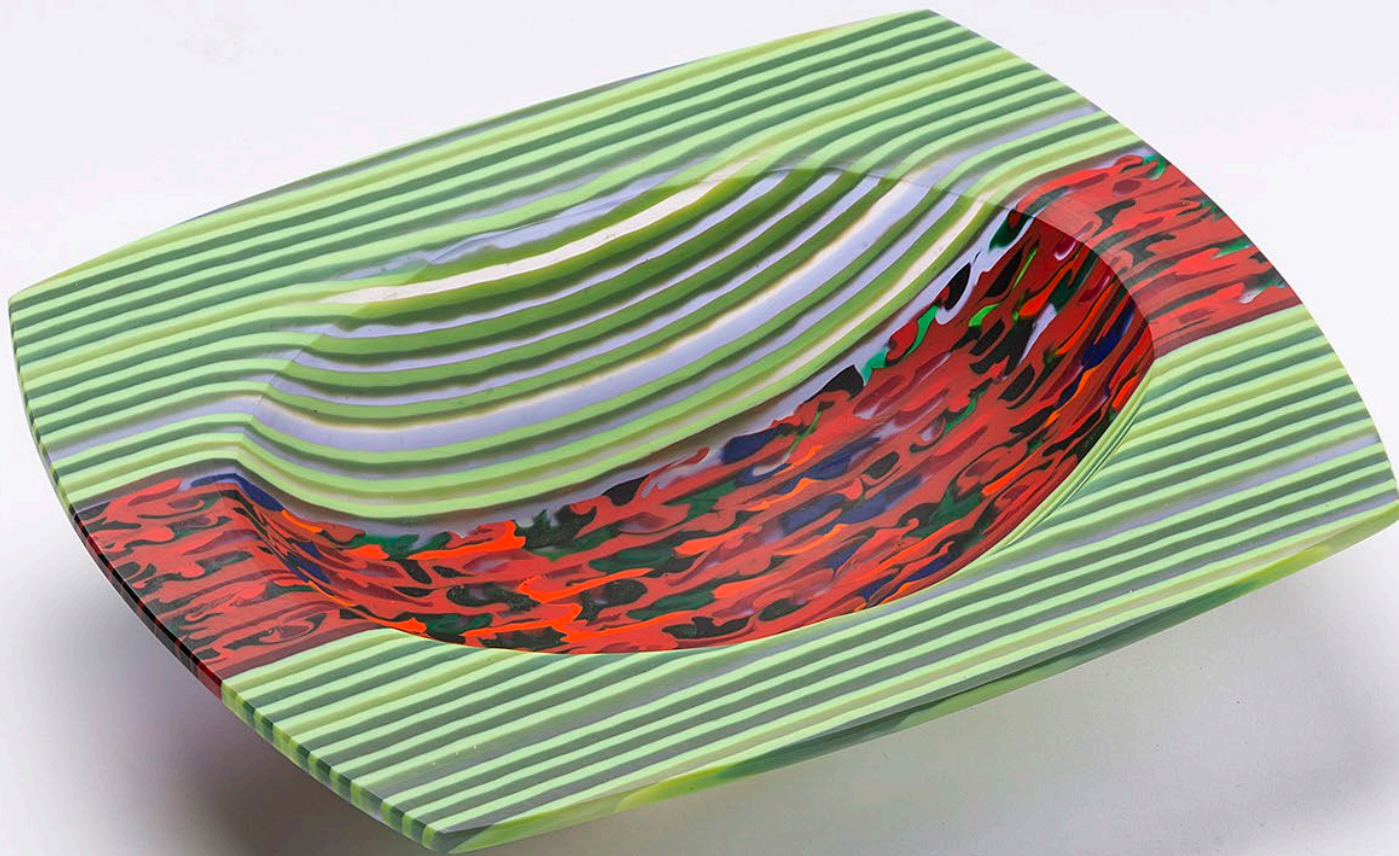
press mould earthenware, glaze

63.0 x 35.0 x 7.0 cm

CMAg, donated through the Australian
Government's Cultural Gifts Program by the artist 2009



Mark MOHELL
(born Australia 1975)
Untitled 004 2013
from the Kerbside series
archival pigment print
61.7 x 61.0 cm
CMAG, purchased 2016



Klaus MOJE
(born Germany 1936,
died Australia 2016; Australia from 1982)
Bowl 1997
kiln-formed, mosaic glass
7.5 x 32.2 x 25.7 cm
CMAG, purchased 1997



Rose MONTEBELLO

(born England 1974,
Australia from 1982)

Circle hold 2010

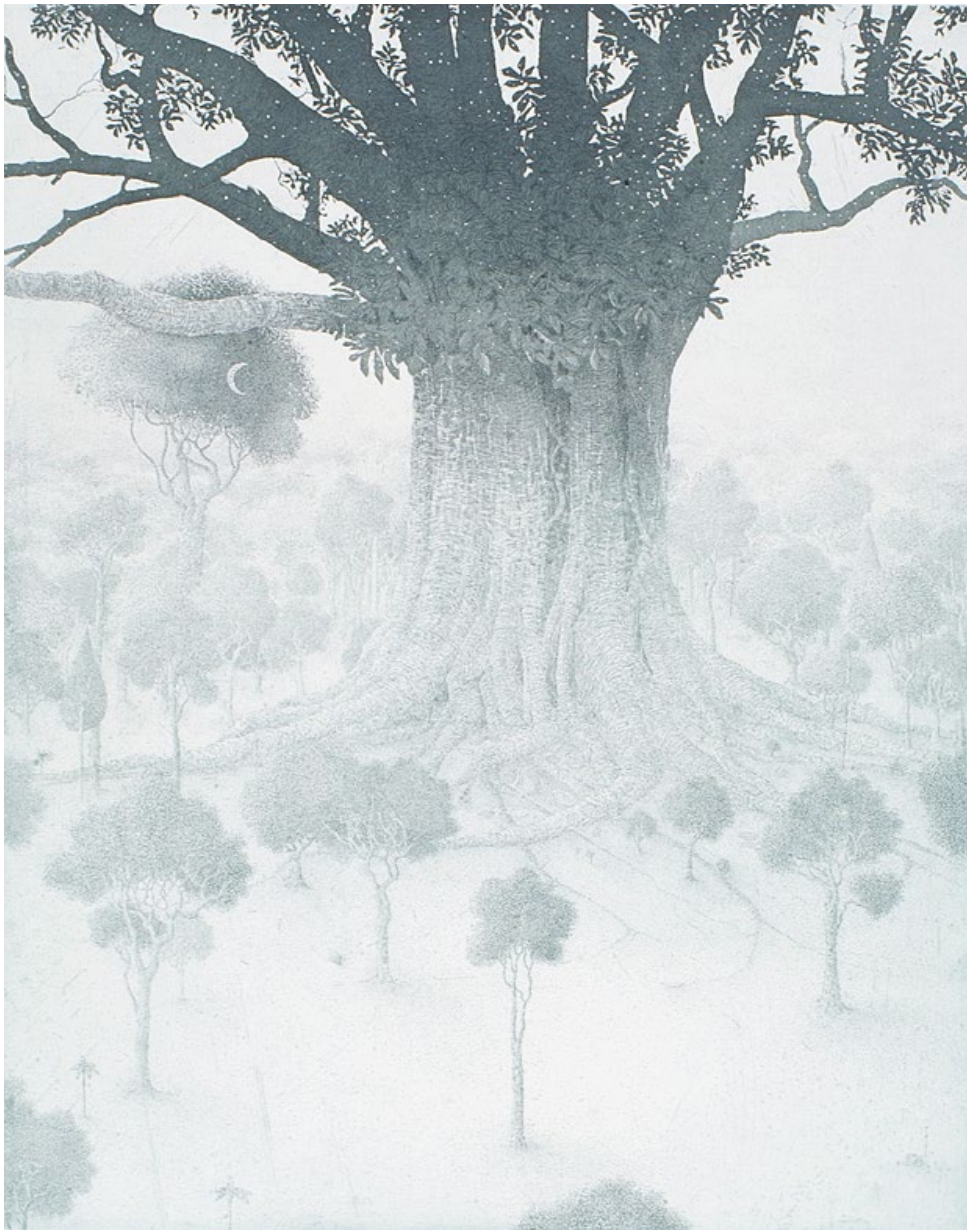
collage of colour photocopies of
printed magazine/book images,
on mountboard

38.0 cm [diameter]

CMAG, purchased 2015



Marrnyula MUNUNGGURR
(born Australia 1964,
Djapu people, Northern Territory) artist
Shaun POUSTIE printer, STUDIO ONE INC.
Untitled 1999
screenprint
23.8 x 20.4 cm
CMAG, gift of Studio One Inc 2000



Jonathan NIX

artist

Basil HALL printer, STUDIO ONE INC.

Untitled 1996

etching/aquatint

45.0 x 35.7 cm

CMAG, gift of Studio One Inc 2000



Sidney NOLAN

(born Australia 1917,
died England 1992)

Carcass 1953

oil on composition board
91.9 x 121.8 cm

The Nolan Collection is managed by
Canberra Museum and Gallery on
behalf of the Australian Government



Ian NORTH

(born New Zealand 1945,
Australia from 1971)

Canberra suite #12 1980

from the Canberra suite series
C-type print, from a medium
format negative, printed 1984
40.4 x 50.5 cm

CMAG, purchased 2012



Christopher OATES
(born Australia 1946)
Tuggeranong underpass 2014
gouache on paper
65.0 x 54.0 cm
CMAG, purchased 2014



Derek O'CONNOR
(born England 1957,
Australia from 1969)
Untitled #7 2002-03
oil on board
62.0 x 69.5 cm
CMAG, purchased 2003



Ruth OLIPHANT

(born Australia 1977)

Water cycle 2011

3 parts; blown glass vessels, with fused
and carved glass inserts

11.8 x 7.0 cm; 11.8 x 7.0 cm; 12.0 x 7.0 cm

CMAA, purchased with funds from
the Meredith Hinchliffe Fund 2011



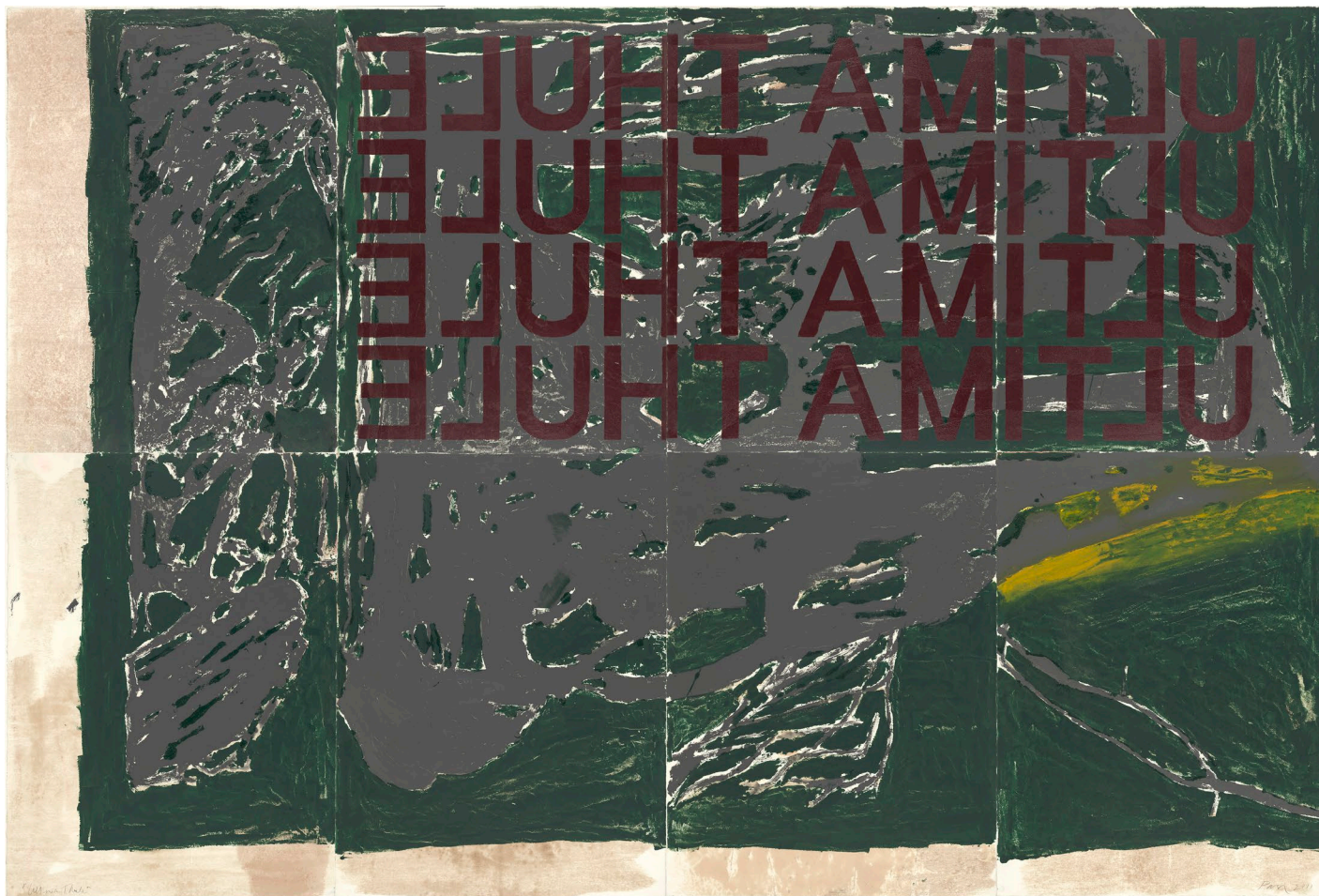
John OLSEN
(born Australia 1928)
Brindabellas 2015
oil on canvas
45.5 x 60.5 cm
CMAG, gift of the artist 2015



O dreamy, gloomy, friendly Trees,
I came along your narrow track
To bring my gifts unto your knees,
And gifts did you give back;
For then I brought this heart that burns
And thoughts that bitterly repine,
And laid them here among the ferns
And the hum of boughs divine.

Ann OWEN
STUDIO ONE INC.
The trees 1991
etching
16.5 x 10.4 cm
CMAG, gift of Studio One Inc 2000

Ann Owen 1991



Mike PARR

(born Australia 1945) artist

John LOANE printer, VIRIDIAN PRESS

Ultima thule 2011

8 parts; carborundum and stencil print

239.0 x 355.8 cm [printed image overall]

CMAAG, donated through the Australian Government's

Cultural Gifts Program by Sara Kelly 2017



WP

An Armadillo looks at something

Nov 90

Mike PARTRIDGE
STUDIO ONE INC.
An armadillo looks at something 1990
etching/linocut
47.2 x 39.0 cm
CMAG, gift of Studio One Inc 2000



Patsy PAYNE

(born England 1955, Australia from 1960)

Imprint IV 2005

linocut and screenprint

99.0 x 64.0 cm

CMAg, purchased 2005



Sharon PEOPLES

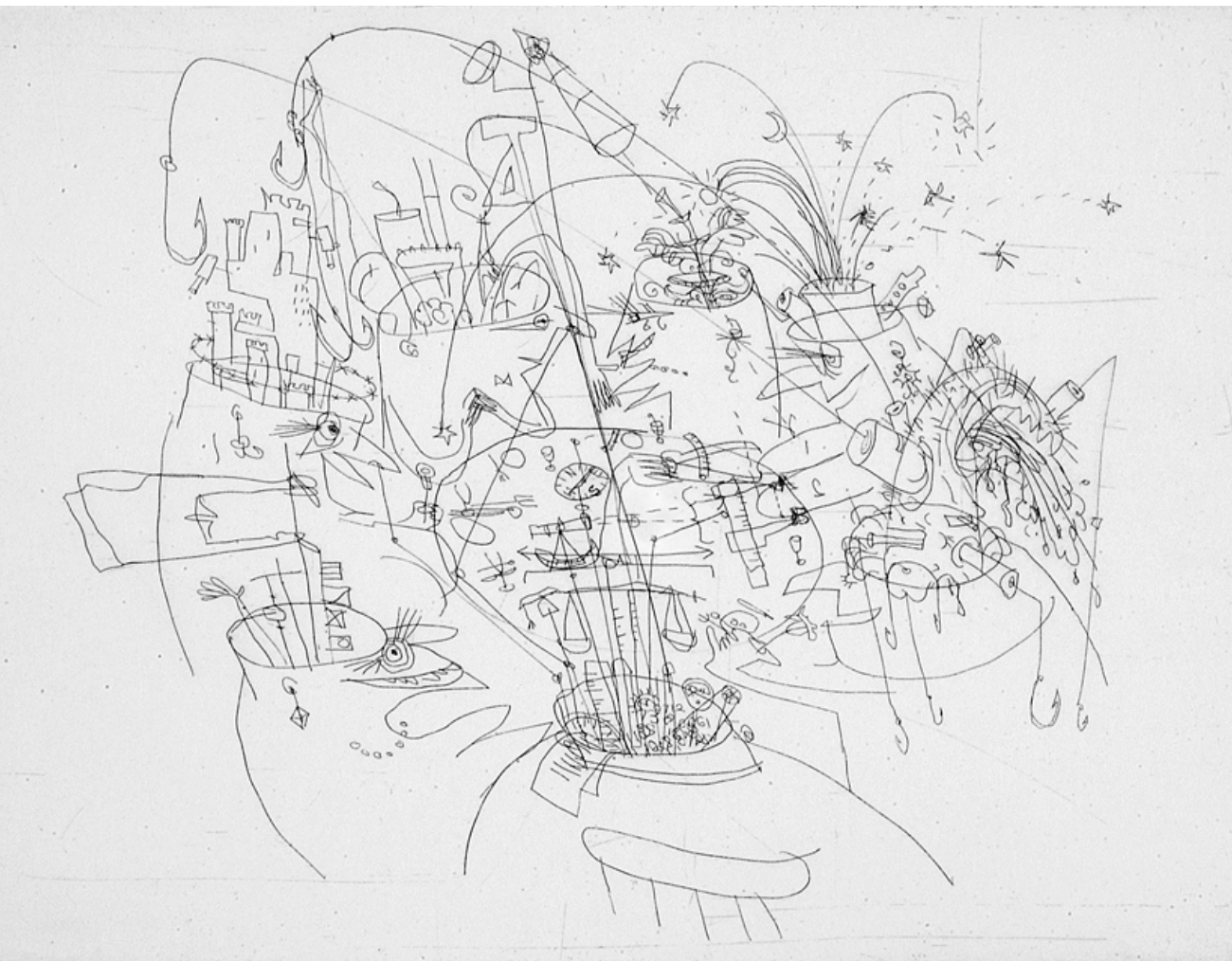
(born Australia 1957)

Spotted shoes 1998

cotton machined embroidery on cotton

21.5 x 23.5 x 0.3 cm

CMAG, purchased 1998



Bruce PETTY
(born Australia 1929) artist
Basil HALL printer, STUDIO ONE INC.
Untitled 1994
etching
24.7 x 32.2 cm
CMAG, gift of Studio One Inc 2000



Frances PHILIP

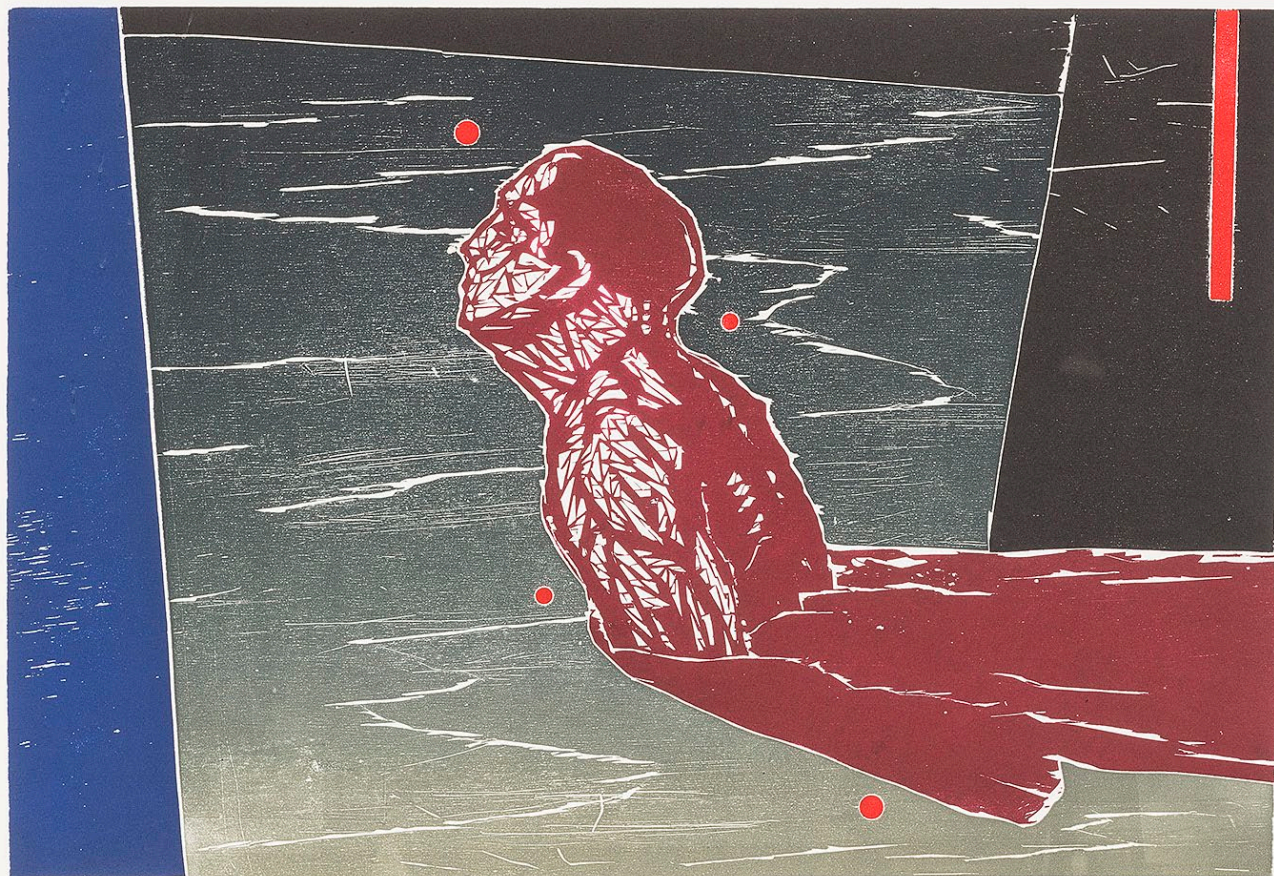
(Australia 1927-2006)

Anna Simons 1966

oil on board

109.0 x 91.5 cm

CMAG, donated through the Australian
Government's Cultural Gifts Program by
Candida Griffiths 2007



2/10

'Wake'

John Pratt
09

John PRATT
(born Australia 1952)
Wake 2009
colour woodcut
37.0 x 53.0 cm
CMAG, purchased 2009



Stephen PROCTER

(born England 1946, died Australia 2001; Australia from 1992)

Intermedian 1996

3 parts; blown, cut, engraved glass, card

18.0 x 70.0 x 27.5 cm

CMAG, purchased with funds donated by Deacons Graham and James 2000



W/P PUKAMANI POLES Fiona Puruntatameri 92

Fiona PURUNTATAMERI
 (born Australia 1973, Tiwi people,
 Northern Territory) artist
 Chris DENTON printer, STUDIO ONE INC.
Pukamani poles 1992
 etching
 14.5 x 16.3 cm
 CMAG, gift of Studio One Inc 2000



WIP/13.

Tungas

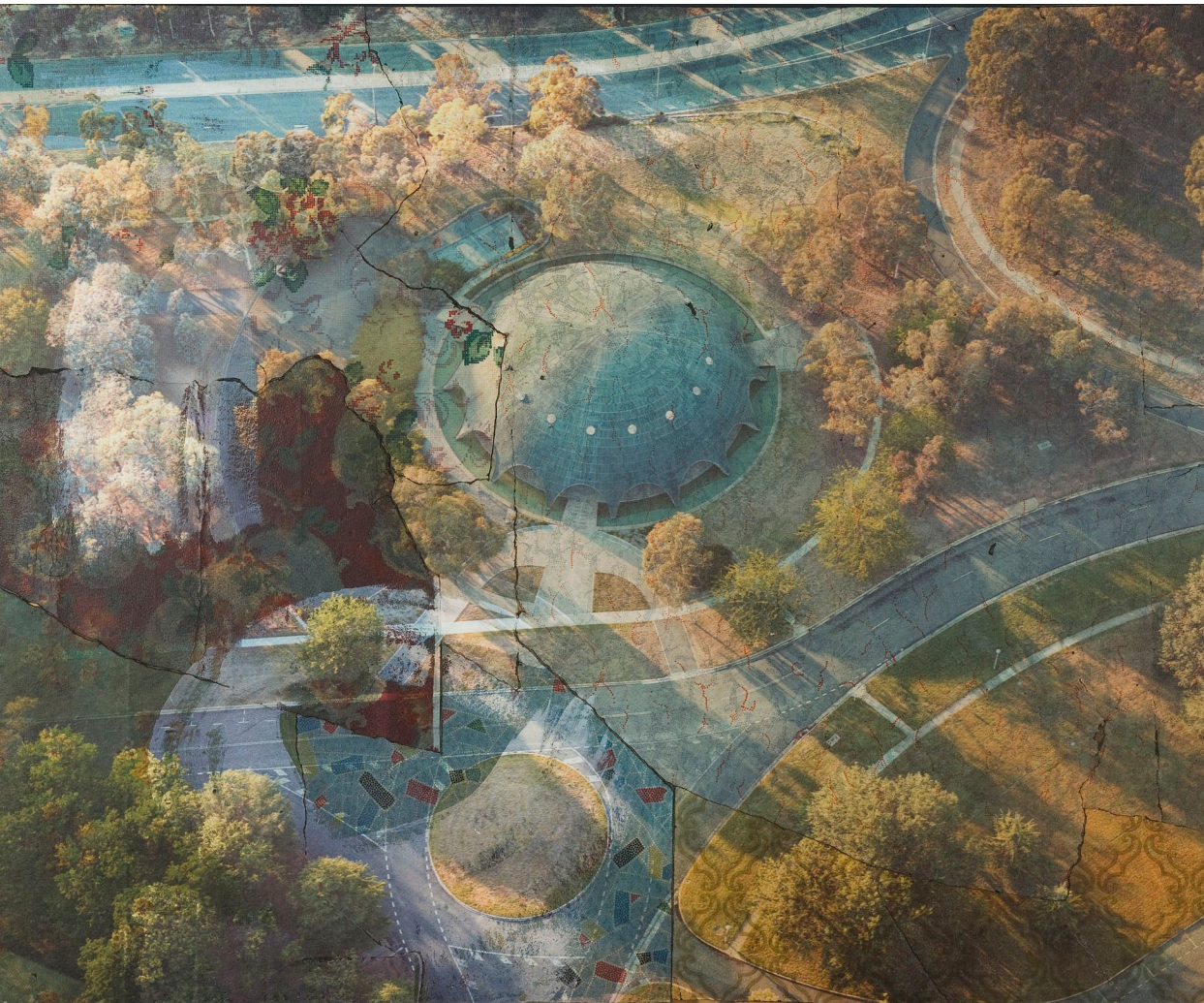
T. Puruntatameri 96.

Thecla PURUNTATAMERI
 (born Australia 1971, Tiwi people,
 Northern Territory) artist
 Toni BAILEY printer, STUDIO ONE INC.
Tungas 1996
 etching
 17.7 x 14.6 cm
 CMAG, gift of Studio One Inc 2000



Jude RAE

(born Australia 1956)
Victoria Chambers 2006
charcoal on paper
200.0 x 150.0 cm
CMAG, purchased 2007



Bruce REYNOLDS
(born Australia 1955)
Academy 2006
inkjet print and synthetic polymer
paint on linoleum, on wood
122.0 x 149.8 x 7.5 cm
CMAG, purchased 2007



Ted RICHARDS
(born Australia 1937)
The Yarralumla to Acton morning ferry 1966
black and white photograph
38.7 x 48.8 cm
CMAG, purchased 2007



Neil ROBERTS

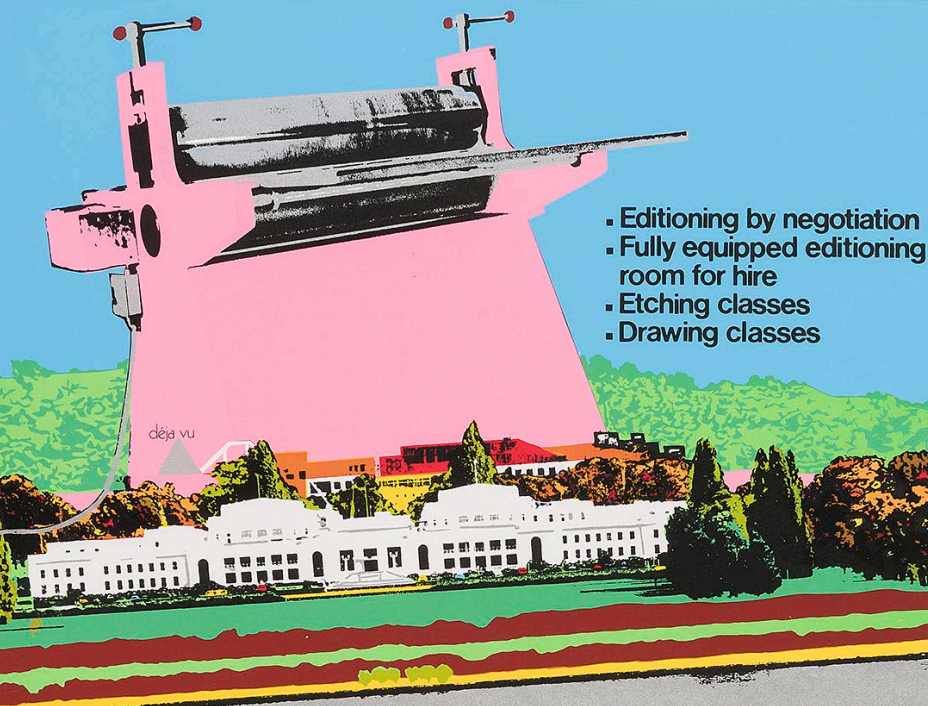
(Australia 1954-2002)

Cryonic quintet 1994

5 parts; commercially produced
domestic glass vessels forming 5 towers
on painted wooden stools, on wooden
platform, on hotel beer glasses
dimensions variable,
platform 122.0 x 242.0 x 1.0 cm
CMAG, purchased 1996



Toni ROBERTSON
(born Australia 1953)
Canberra beaches no. 2 – Parliament House 1984
screenprint
56.0 x 85.6cm
CMAG, purchased 1993 for ACT Parks and
Conservation, transferred to CMAG 1996



- Editing by negotiation
- Fully equipped editing room for hire
- Etching classes
- Drawing classes

STUDIO ONE

Studio One is an independent, access workshop

For further information contact
Dianne Fogwell and Meg Buchanan



STUDIO ONE
Suite 101 (first floor)
71 Leichhardt Street
P.O. Box 164
KINGSTON ACT 2604
(062) 95 9920



Toni ROBERTSON
(born Australia 1953)
STUDIO ONE INC.
Studio One c1983
screenprint
73.5 x 48.2 cm
CMAG, gift of Studio One Inc 2000



William ROBINSON

(born Australia 1936) artist

Basema MAHDI printer, STUDIO ONE INC.

The sea from Springbrook 1998

etching

23.7 x 39.8 cm

CMAG, gift of Studio One Inc 2000



W/p.

A Brindabella

RF 96.

David ROFE
(born Australia 1952) artist
Jenny ALLEN printer, STUDIO ONE INC.
A brindabella 1996
etching
22.5 x 30.1 cm
CMAG, gift of Studio One Inc 2000



Luna RYAN

(born The Netherlands 1957, Australia from 1987)

A broken performance 2013

2 parts; battered television screen particle with kiln-cast Blackwood
crystal component

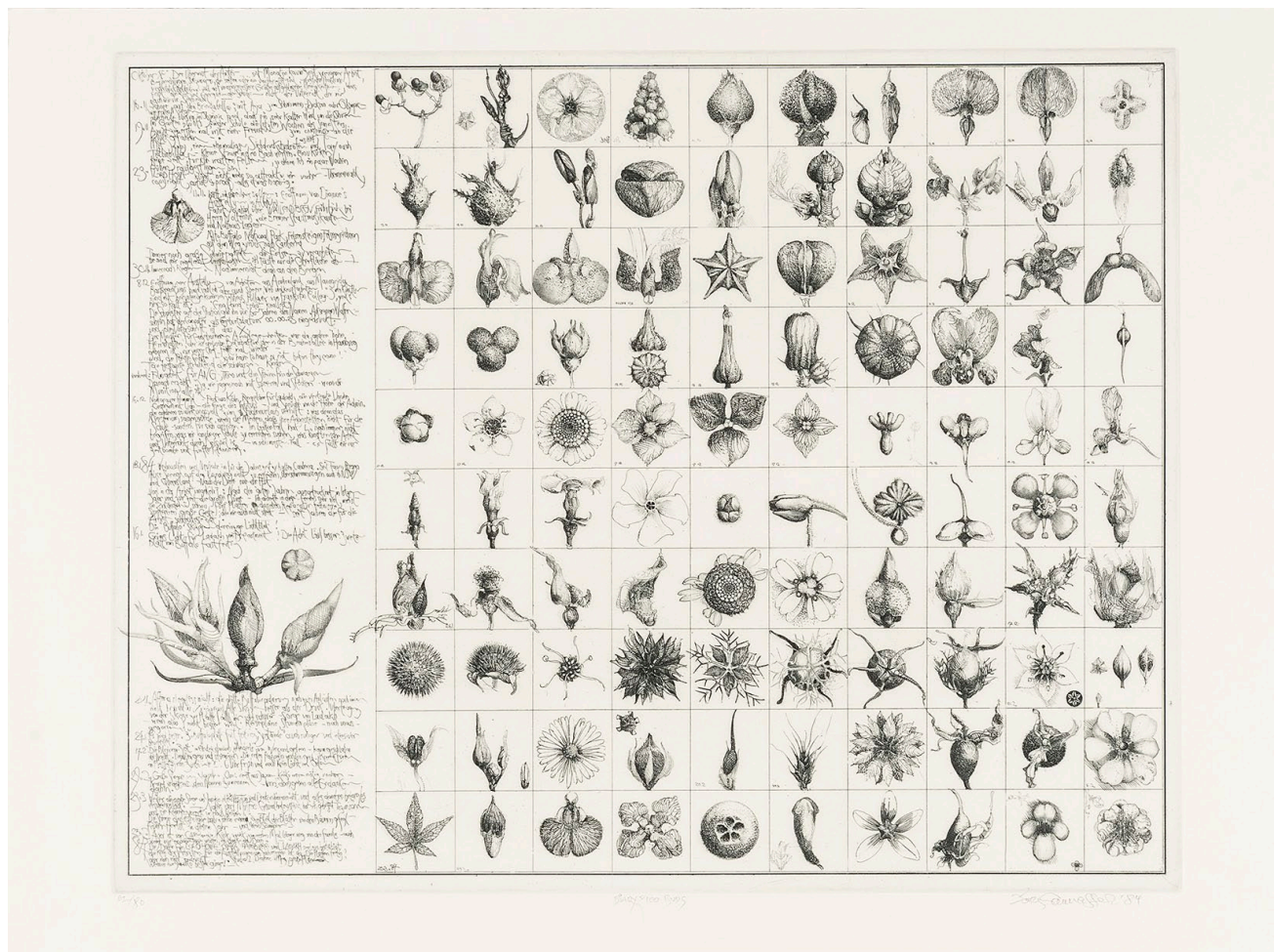
16.0 x 53.0 x 10.0 cm

CMAG, purchased with funds from the Meredith Hinchliffe Fund 2013



Andrew SAYERS
(born England 1957, died Australia 2015;
Australia from 1964)
Room with a view 2015

Gouache on paper
28.0 x 57.0 cm
CMAG, purchased 2016



Jörg SCHMEISSER

(born Germany 1942, died Australia 2012; Australia from 1976)

Diary and 100 buds 1984

etching and aquatint

54.3 x 72.8 cm

CMAG, donated through the Australian Government's Cultural Gifts

Program by Keiko Schmeisser 2013



Erica SECCOMBE
(born Australia 1968)
Nanoplastica 2008
digital projection; 3 continuous loop DVDs
CMAG, purchased 2008



T/P

U. Sellbach
93

Udo SELLBACH

(born Germany 1927, died Australia 2006; Australia from 1955) artist
Basil HALL printer, STUDIO ONE INC.

Untitled 1993

etching and aquatint

30.0 x 45.0 cm

CMAG, gift of Studio One Inc 2000



Jaishree SRINIVASAN

(born India 1954, USA from 1975, Australia 1978-82,
Switzerland 1982-85, Australia from 1985)

Vanity box 1995

6 parts; wheel-thrown, carved and assembled
clay, coloured slips, terracigillata

25.0 x 26.5 cm

CMAG, purchased 1996



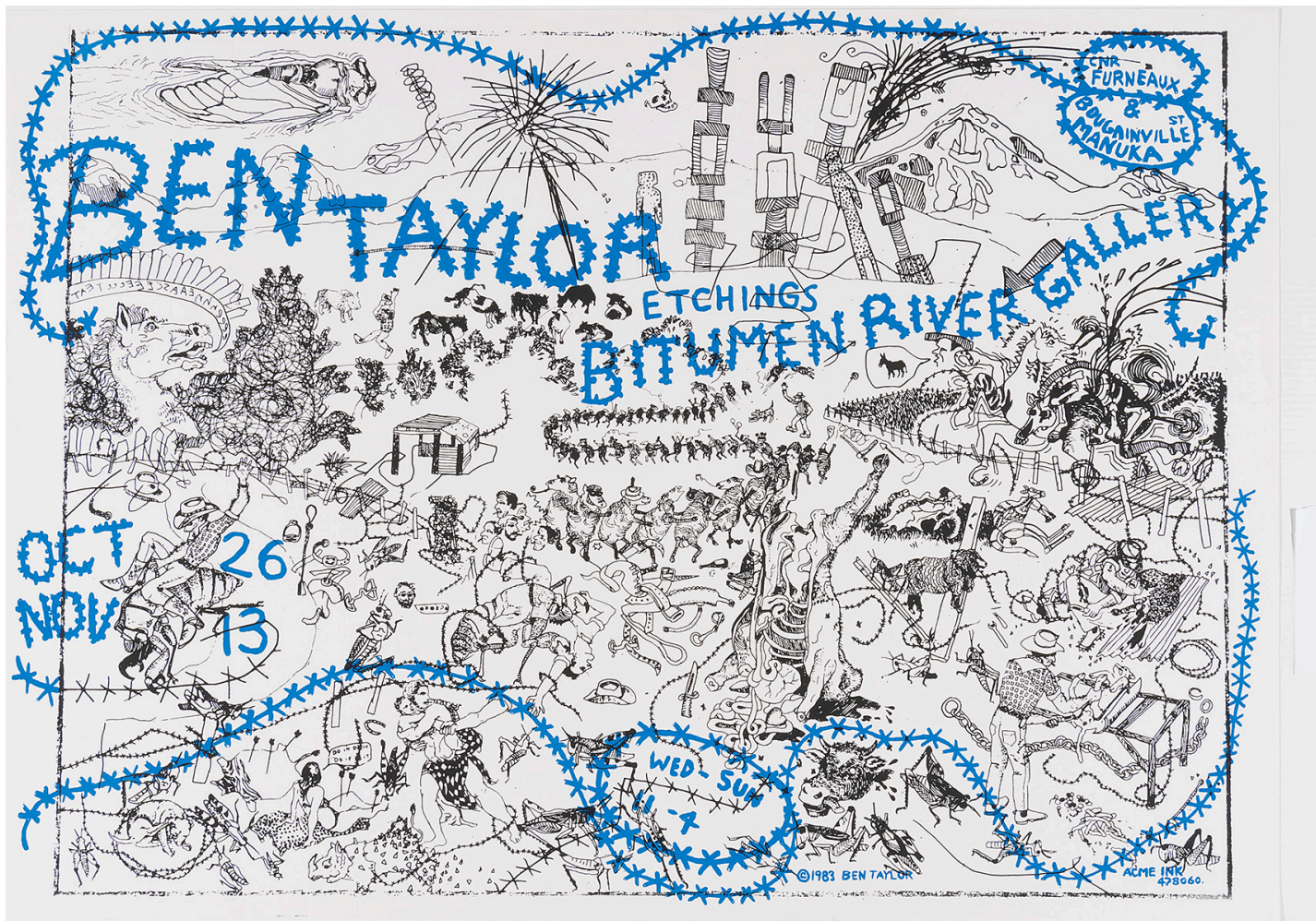
Kate STEVENS
(born Australia 1979)
View #4 2016
oil on canvas
40.5 x 50.5 cm
CMAG, purchased 2016



STUDIO HAÇIENDA (commenced 2005)
[Blanche TILDEN (born Australia 1968) & Phoebe PORTER (born Australia 1979)]
General Assembly – Canberra [a series of 3 brooches with a selection of various
interchangeable parts] 2007
anodised aluminium, borosilicate glass, stainless steel
CMAG, purchased 2009



Hiroe SWEN
(born Japan 1934,
Australia from 1968)
Oceanscape 2000
hand-built stoneware, oxidised
green glaze, oxide decoration
24.0 x 26.5 x 11.5 cm
CMAG, gift of ACTTAB 2006



Ben TAYLOR

(born Australia 1960)

ACME INK print cooperative

Ben Taylor Etchings 1983

screenprint

64.9 x 91.0 cm

CMAG, donated through the Australian government's Cultural Gifts Program by Mandy Martin 1998



W.P.

Brugel comes to Michelago

Ben Taylor

Ben TAYLOR

(born Australia 1960) artist

Barbara McCONCHIE printer, STUDIO ONE INC.

Brugel comes to Michelago 1999

etching

22.1 x 29.6 cm

CMAG, gift of Studio One Inc 2000



Michael TAYLOR

(born Australia 1933)

Fish and reef 1977

oil on canvas

137.0 x 113.7 cm

CMAG, donated through the Australian
Government's Cultural Gifts Program
in memory of Ruth H Prowse 2011



Sue TAYLOR

(born England 1944, Australia from 1982)

eX and Reg (eX de Medici and her dog Reggie) 2007

oil on canvas

184.0 x 100.0 cm

CMAG, gift of the artist 2009



Wendy TEAKEL

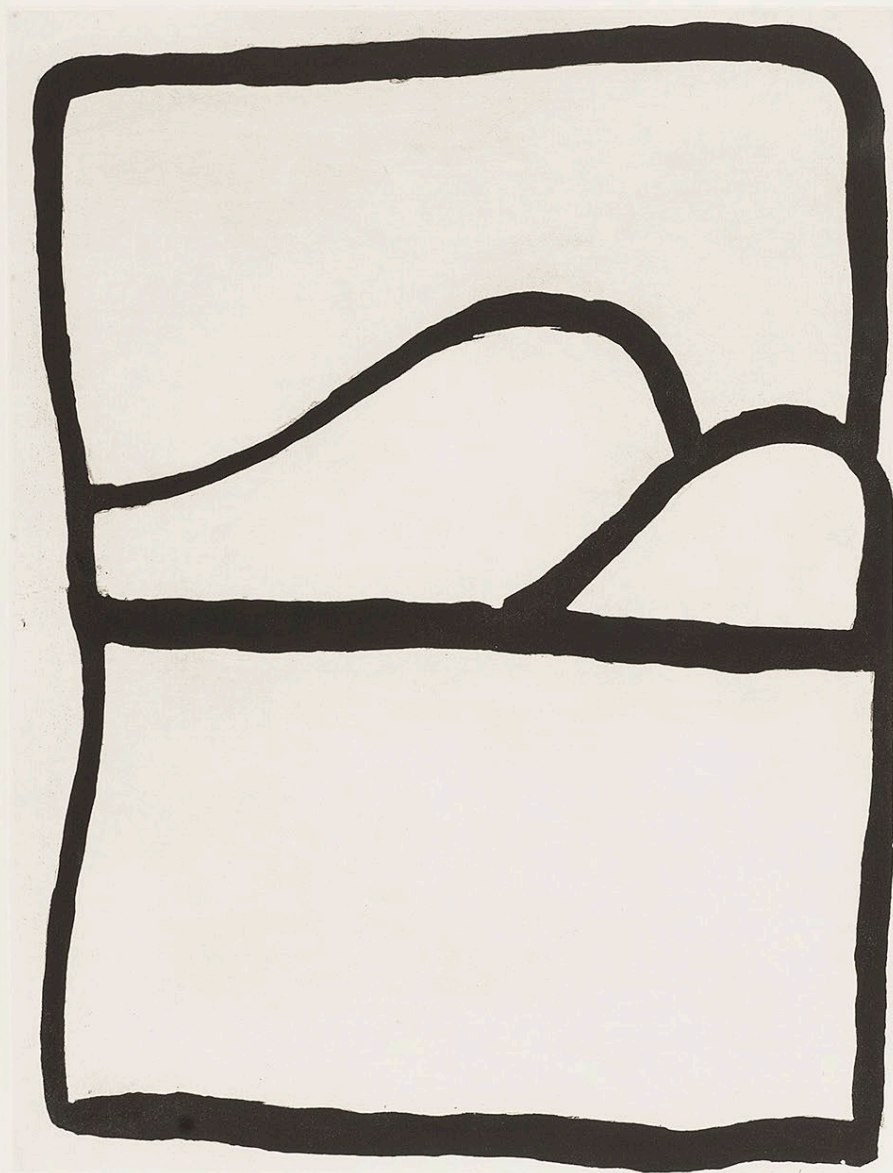
(born Australia 1957)

Wind 2005

wire, synthetic polymer paint, earth, grasses

130.0 x 180.0 x 30.0 cm

CMAG, donated through the Australian government's Cultural Gifts Program by the artist 2011



Wp

Mt Newman Side 3

ROVER

Rover THOMAS

(Australia 1926/1928-1998, Kukatja/
Wangkajunga peoples, Western Australia) artist
Basil HALL printer, STUDIO ONE INC.
Barbara McCONCHIE printer, STUDIO ONE INC.
Mt Newman 1996
etching

64.4 x 49.0 cm

CMAG, gift of Studio One Inc 2000



Lesbia THORPE
(Australia 1919-2009)
STUDIO ONE INC.
Untitled 1993
etching
11.7 x 9.9 cm
CMAG, gift of Studio One Inc 2000



Nature speaks: AT 2002

each part: 25.0 x 35.2 cm, nos. 72586 - 72610 ; overall: 101.6 x 142.2 cm

CMAA, purchased 2002



Kensuke TODO

(born Japan 1975, Australia from 2002)

Apex 2008

mild steel

105.0 x 77.6 x 37.0 cm

CMAA, purchased with funds from
the Meredith Hinchliffe Fund 2008



Annie TREVILLIAN

(born Australia 1953)

Bass Gardens 2003

screenprint

81.6 x 60.5 cm

CMAG, gift of Megalo Access Arts Inc 2003



Peter VAN DE MAELE

(born Belgium 1959, Australia from 1963)

First light - Hovell & Hume's camp 1824 2005

from the *Suite Weereewa* series

etching

24.7 x 19.5 cm

CMAG, gift of the artist, 2009

8/10

First light - Hovell & Hume's camp 1824

05
05



Peter VANDERMARK
(born Australia 1960)
An-ism 2006
enamel paint on manufactured mdf letters
28.0 x 37.0 x 25.0 cm
CMAG, purchased 2007



W/P Daughter & Mother IX

R Wallace-Crabbe

Robin WALLACE-CRABBE

(born Australia 1938) artist

Basil HALL printer, STUDIO ONE INC.

Daughter and mother IX 1989

etching

36.5 x 27.4 cm

CMAG, gift of Studio One Inc 2000



Ruth WALLER

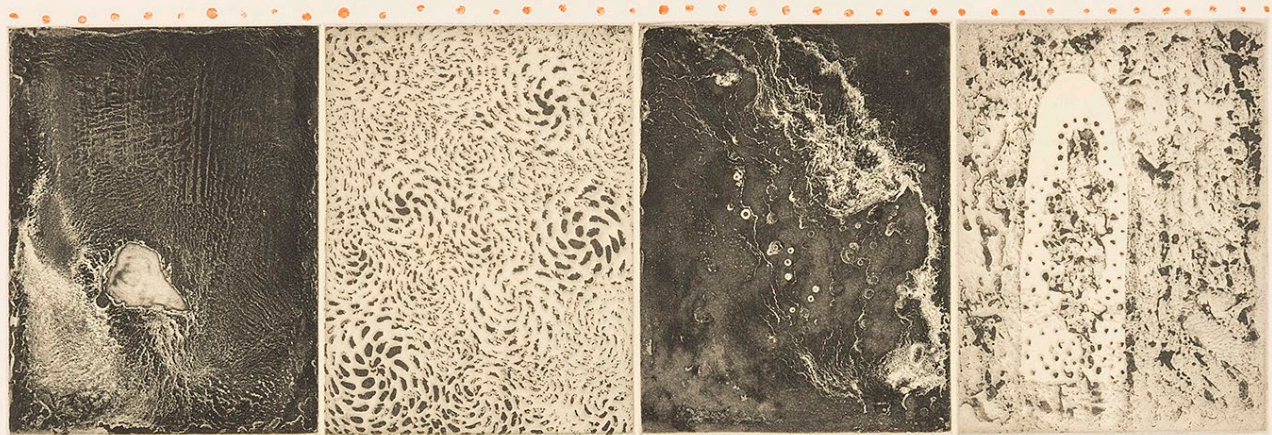
(born Australia 1955)

Painting with quatrefoil 1999

synthetic polymer paint, oil on canvas

140.0 x 180.0 cm

CMAG, purchased with funds from the Meredith Hinchliffe Fund 2011



w/p

ground piece

Judy WATSON 91

Judy WATSON

(born Australia 1959, Waanyi people, Queensland) artist

Basil HALL printer, STUDIO ONE INC.

Chris DENTON printer, STUDIO ONE INC.

Ground piece 1991

etching

16.1 x 45.5 cm

CMAG, gift of Studio One Inc 2000



David WATT

(born Scotland 1950, died Australia 1998; Australia from 1966)

House from *Inhabiting the archive* 1997

synthetic polymer paint on composition board

116.5 x 272.0 x 3.5 cm

CMAG, purchased 2000

An Exhibition of Student Work, Canberra School of Art Gallery

Baldessin Cres. Acton

OPENING :

19th FEB - 8th MARCH

THE FIRST POST GRADUATE SHOW

HOURS: WED - FRI 11-5, SAT 12-5, SUN 2-5

© D Wells 1983 ACME INK (062) 478060

Dianna WELLS

(born Australia 1961)

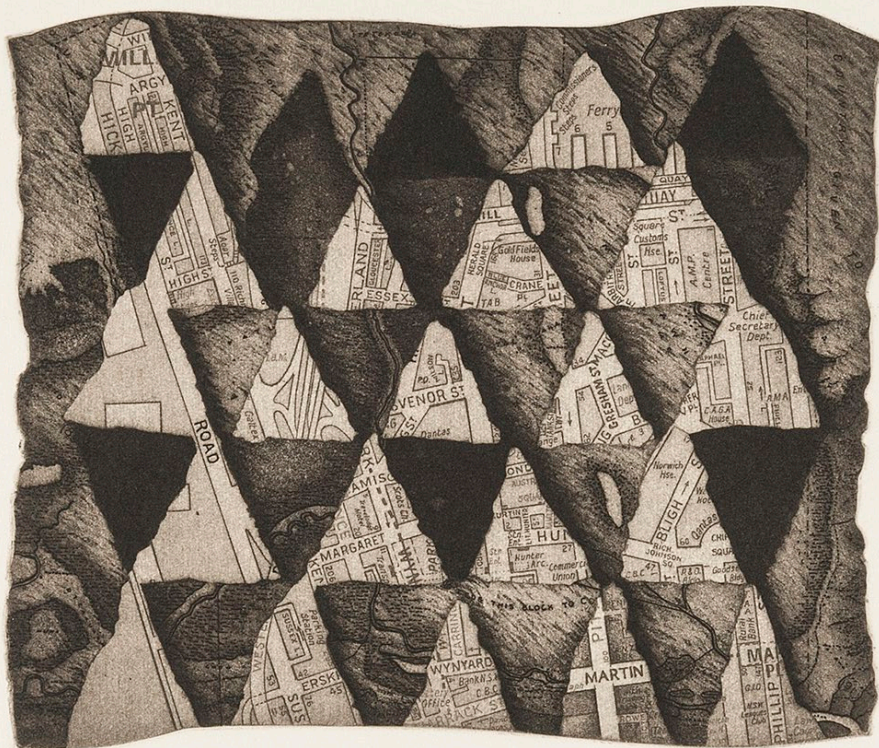
ACME INK print cooperative

The first post-graduate show 1983

screenprint

65.0 x 45.5 cm

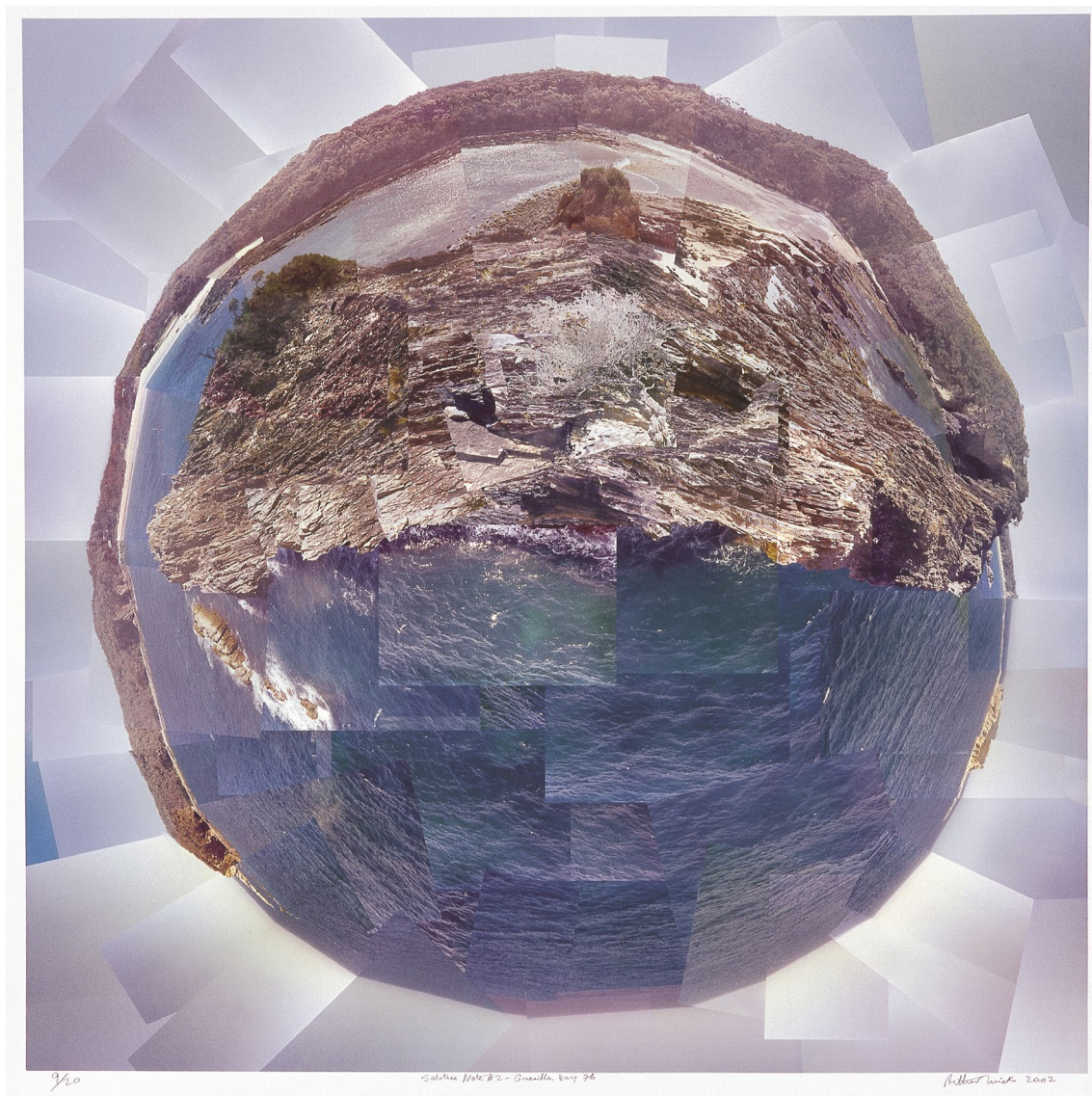
CMAG, donated through the Australian
Government's Cultural Gifts Program by Mandy Martin 1998



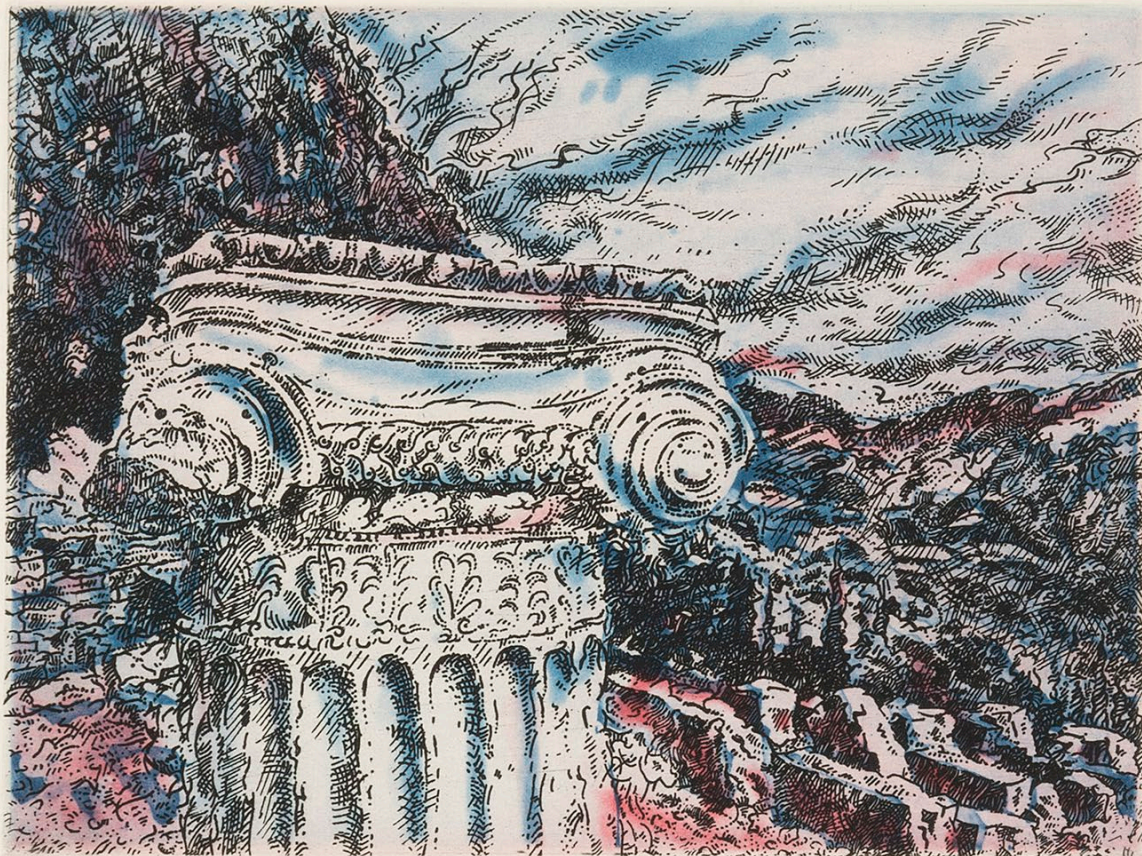
W/P. Looking back from Martin Place to Matata. Robin White. 1992.

Robin WHITE

(born New Zealand 1946) artist
 Deborah PERROW printer, STUDIO ONE INC.
Looking back from Martin Place to Matata 1992
 etching
 18.1 x 21.1 cm
 CMAG, gift of Studio One Inc 2000



Arthur WICKS
(born Australia 1937)
Solstice note #2 - Guerilla Bay '76 2002
digitised colour photographic montage
110.0 x 106.5 cm
CMAG, purchased 2004



W/P

"COLUMN - DELPHI"

MW 98
✱

Michael WINTERS
(born Australia 1943)
STUDIO ONE INC.
Column - Delphi 1998
colour etching
14.7 x 19.6 cm
CMAG, gift of Studio One Inc 2000



2/10

Yatjuk yatjuk

clara

Clara WUBUKWUBUK
(born Australia 1950, Ganabingu
people, Northern Territory)
STUDIO ONE INC.
Yatjuk yatjuk (Jesus bird) 1997
drypoint etching
44.7 x 60.2 cm
CMAG, gift of Studio One Inc 2000



WLP

Jimmy Wululu (U)

Jimmy WULULU

(Australia 1936-2005,
Gupapuyngu people,
Northern Territory)
STUDIO ONE INC.

Untitled 1997

lithograph

37.5 x 51.2 cm

CMAG, gift of Studio One Inc 2000



Peter ZANETTI
(born Australia 1954)
Gibraltar Rocks 2003
screenprint
73.3 x 52.3 cm
CMAG, gift of Megalo Access Arts Inc 2003



Amelia ZARAFIS

(born Australia 1977)

Soft edges (Monaro Highway) 2014

digital projection; video loop, 16.08 mins

CMAG, purchased 2016

Soft edges (travel snug) 2014

felt, cotton, wadding

CMAG, gift of the artist 2016



Andrzej ZIELIŃSKI
(born USA 1976, Australia 2011-12)
Reading disc 2011
synthetic polymer paint on plywood
60.0 x 60.0 cm
CMAG, purchased 2012

LIST OF ARTISTS

Ian ABDULLA

(Australia 1947-2011,
Ngarrindjeri people,
South Australia)

Chris ABRAHAMS

(born Australia 1965)

ACME INK print cooperative

(Canberra 1982-1987)

Helen AITKEN-KUHNEN

(born Australia 1952)

Alison ALDER

(born Australia 1958)

Micky ALLAN

(born Australia 1944)

Joyce ALLEN

(Australia 1916-1992)

Masahiro ASAKA

(born Japan 1979,
Australia from 2000)

Alex ASCH

(born USA 1965,
Australia from 1987)

Lionel BAWDEN

(born Australia 1974)

Judy BENJAMIN

Vivienne BINNS

(born Australia 1940)

Sally BLAKE

(born Australia 1966)

G W BOT

(born Pakistan 1954,
Australia from 1955)

Rachel BOWAK

(born Australia 1964)

Arthur Merric Bloomfield

BOYD (Australia 1920-1999)

Robert BOYNES

(born Australia 1942)

Julie BRADLEY

(born Australia 1958)

Jack BRITTEN

(Australia 1924-2002,
Gija people,
East Kimberley,
Western Australia)

Deirdre BROCKLEBANK

(born Australia 1947)

Jan BROWN

(born Australia 1922)

Meg BUCHANAN

(born Australia 1949)

byrd [Daniel MAGINNITY]

(born Australia 1974)

Ethel CARRICK FOX

(born England 1872,
died Australia 1952)

Eduardo CASTELLANOS

(born Mexico 1927,
died Australia 1999)

Pierre CAVALAN

(born France 1954,
Australia from 1980)

Julia CHURCH

(born England 1959,
Australia and Italy
from 1994)

Victoria CLUTTERBUCK

(born England 1952)

Sarit COHEN

(born Israel 1967,
Australia from 1981)

Tony CONVEY

(born Australia 1946)

Olive COTTON

(Australia 1911-2003)

Greg DALY

(born Australia 1954)

Hamilton DARROCH

(born Australia 1972)

Janet DAWSON

(born Australia 1935)

Pam DEBENHAM

(born Australia 1955)

Janet DeBOOS

(born Australia 1948)

Mariana DEL CASTILLO

(born Ecuador 1966,
Australia from 1972)

Lyndy DELIAN

(born Australia 1953,
Wathaurong people, Victoria)

eX DE MEDICI

(born Australia 1959)

Nadège DESGENÉTEZ

(born France 1973,
Australia from 2005)

Mel DOUGLAS

(born Australia 1978)

Janenne EATON

(born Australia 1950)

Ben EDOLS

(born Australia 1967)

& Kathy ELLIOTT

(born Australia 1964)

Anna EGGERT

(born Croatia 1952,
Australia from 1962)

Denise FERRIS

(born Australia 1953)

Dianne FIRTH

(born Australia 1945)

FINK AND CO

(commenced 1993)
manufacturer

Dianne FOGWELL

(born 1958)

Robert FOSTER

(Australia 1962-2016)

Annie FRANKLIN

(born Australia 1962)

Cathy FRANZI

(born Australia 1963)

Rosalie GASCOIGNE

(born New Zealand 1917,
died Australia 1999;
Australia from 1943)

Helen GEIER

(born Australia 1946)

Ninon GEIER

(born Switzerland 1923,
died Australia 2015;
Australia from 1957)

George GITTOES

(born Australia 1949)

Garry GREENWOOD

(born England 1943,
died Australia 2005;
Australia from 1962)

Elioth GRUNER

(born New Zealand 1882,
died Australia 1939;
Australia from 1883)

Marie HAGERTY

(born Australia 1964)

Basil HALL

(born Australia 1954)

William Stenhouse

HAMILTON

(Australia 1919-2016)

Treahna HAMM

(born Australia 1965,
Yorta Yorta people, Victoria)

Matthew HARDING

(Australia 1964-2018)

Bernard HARDY

(born Australia 1941)

Patsy HELY

(born Australia 1946)

Petr HEREL

(born Czechoslovakia 1943,
Australia from 1973, France
1976-78, 1985-86)

Frank HINDER

(Australia 1906-1992; United States of America 1927-34)

Brian HIRST

(born Australia 1956)

Steven HOLLAND

(born Australia 1960)

Judy HORACEK

(born Australia 1961)

Bruce HOWLETT

(born Australia 1965)

George INGHAM

(born Pakistan 1940, died Australia 2003; Australia from 1982)

Robert INGPEN

(born Australia 1936)

Alison JACKSON

(born Australia 1986)

Abie JANGALA

(Australia 1919-2002, Warlpiri people, Northern Territory)

David JENSZ

(born Australia 1957)

Martyn JOLLY

(born Australia 1959)

Ian JONES

(born United Kingdom 1953, Australia from 1955)

Marlene JULI

(born Australia 1975, Gija people, Western Australia)

Matt KELSO

(born Australia 1952)

Ingo KLEINERT

(born Germany 1941, Australia from 1949)

Emily Kam KNGWARRAY

(Australia 1908/12-1996, Anmatyerr people, Northern Territory)

Elisabeth KRUGER

(born New Caledonia 1955, Australia from 1956)

Johannes KUHNEN

(born Germany 1952, Australia from 1981)

Julian LAFFAN

(born Australia 1974)

Waratah LAHY

(born Australia 1974)

Richard LARTER

(born England 1929, died Australia 2014; Australia from 1962)

Henri LE GRAND

(born The Netherlands 1921, died Australia 1978; Australia from 1950)

Michael LE GRAND

(born Australia 1951)

Jon LEWIS

(born USA 1950, Australia from 1951)

Marcia LOCHHEAD

(born Australia 1970)

Joseph LYCETT

(England 1774-1828; Australia 1814-22)

Ron McBURNIE

(born Australia 1957)

Alasdair McGREGOR

(born Australia 1954)

Anita McINTYRE

(born Australia 1942)

Peter McLEAN

(born Australia 1971)

Ann McMAHON

(born Australia 1959)

Marie McMAHON

(born Australia 1953)

Liz McNIVEN

(born Australia 1963, Badyidi (Bujiti) people, Queensland)

Kim MAHOOD

(born Australia 1953)

Peter MALONEY

(born Australia 1953)

Louise MARSH**Mandy MARTIN**

(born Australia 1952)

Arone MEEKS

(born Australia 1957, Kokoimudji people, Queensland)

Danie MELLOR

(born Australia 1971, Mamu/Ngagen/Ngajan peoples, Queensland)

Mark MOHELL

(born Australia 1975)

Klaus MOJE

(born Germany 1936, died Australia 2016; Australia from 1982)

Rose MONTEBELLO

(born England 1974, Australia from 1982)

Marrnyula MUNUNGGURR

(born Australia 1964, Djapu people, Northern Territory)

Jonathan NIX**Sidney NOLAN**

(born Australia 1917, died England 1992)

Ian NORTH

(born New Zealand 1945, Australia from 1971)

Christopher OATES

(born Australia 1946)

Derek O'CONNOR

(born England 1957, Australia from 1969)

Ruth OLIPHANT

(born Australia 1977)

John OLSEN

(born Australia 1928)

Ann OWEN**Mike PARR**

(born Australia 1945)

Mike PARTRIDGE**Patsy PAYNE**

(born England 1955, Australia from 1960)

Sharon PEOPLES

(born Australia 1957)

Bruce PETTY

(born Australia 1929)

Frances PHILIP

(Australia 1927-2006)

John PRATT

(born Australia 1952)

Stephen PROCTER

(born England 1946, died Australia 2001; Australia from 1992)

Fiona PURUNTATAMERI

(born Australia 1973, Tiwi people, Northern Territory)

Thecla PURUNTATAMERI

(born Australia 1971, Tiwi people, Northern Territory)

Jude RAE

(born Australia 1956)

Bruce REYNOLDS

(born Australia 1955)

Ted RICHARDS

(born Australia 1937)

Neil ROBERTS

(Australia 1954-2002)

Toni ROBERTSON

(born Australia 1953)

William ROBINSON
(born Australia 1936)

David ROFE
(born Australia 1952)

Luna RYAN
(born The Netherlands 1957,
Australia from 1987)

Andrew SAYERS
(born England 1957,
died Australia 2015;
Australia from 1964)

Jörg SCHMEISSER
(born Germany 1942,
died Australia 2012;
Australia from 1976)

Erica SECCOMBE
(born Australia 1968)

Udo SELLBACH
(born Germany 1927,
died Australia 2006;
Australia from 1955)

Jaishree SRINIVASAN
(born India 1954,
USA from 1975,
Australia 1978-82,
Switzerland 1982-85,
Australia from 1985)

Kate STEVENS
(born Australia 1979)

STUDIO HAÇIENDA
(commenced 2005):

Blanche TILDEN
(born Australia 1968) &
Phoebe PORTER (born
Australia 1979)

STUDIO ONE INC
print workshop
(Canberra 1985-2000)

Hiroe SWEN
(born Japan 1934,
Australia from 1968)

Ben TAYLOR
(born Australia 1960)

Michael TAYLOR
(born Australia 1933)

Sue TAYLOR
(born England 1944,
Australia from 1982)

Wendy TEAKEL
(born Australia 1957)

Rover THOMAS
(Australia 1926/1928-1998,
Kukatja/Wangkajunga
peoples, Western Australia)

Lesbia THORPE
(Australia 1919-2009)

Imants TILLERS
(born Australia 1950)

Kensuke TODO
(born Japan 1975,
Australia from 2002)

Annie TREVILLIAN
(born Australia 1953)

Peter VAN DE MAELE
(born Belgium 1959,
Australia from 1963)

Peter VANDERMARK
(born Australia 1960)

Robin WALLACE-CRABBE
(born Australia 1938)

Ruth WALLER
(born Australia 1955)

Judy WATSON
(born Australia 1959,
Waanyi people, Queensland)

David WATT
(born Scotland 1950,
died Australia 1998;
Australia from 1966)

Dianna WELLS
(born Australia 1961)

Robin WHITE
(born New Zealand 1946)

Arthur WICKS
(born Australia 1937)

Michael WINTERS
(born Australia 1943)

Clara WUBUKWUBUK
(born Australia 1950,
Ganalbingu people,
Northern Territory)

Jimmy WULULU
(Australia 1936-2005,
Gupapuyngu people,
Northern Territory)

Peter ZANETTI
(born Australia 1954)

Amelia ZARAFTIS
(born Australia 1977)

Andrzej ZIELIŃSKI
(born USA 1976,
Australia 2011-12)

CURATOR'S ACKNOWLEDGEMENTS

My thanks to Harriet Elvin, CEO of the Cultural Facilities Corporation, and Shane Breynard, Director of the Canberra Museum and Gallery, for the opportunity to curate this substantial exhibition showcasing the collection of the Canberra Museum and Gallery, where I have been privileged to be the curator of visual arts for 10 years, half the life of the institution.

I would like to thank my colleagues across the museum for their support on this exhibition – as on many others – and in this instance I particularly wish to single out Tamara Gervasoni, who came on board as assistant curator late last year when we began work in earnest on Celebration. She has been an indefatigable colleague, taking on every aspect of the exhibition with unwavering commitment, attention to detail, a calm and measured approach and with a fine wry sense of humour.

Gary Smith, CMAG's outstanding exhibition guru, led the installation team brilliantly, and, as always, has been a terrific collaborator on the display, solving problems in efficient and inventive ways and making the art look its best. His

team included Billy Coddington, Michelle Day, Oscar Capezio, Zeljko Markov and Salazar Quas, and they were terrific.

CMAG's marvellous designer Shaya Dashtinezhad enthusiastically took on the design for all aspects of the exhibition: the on-line catalogue, poster, room brochures, banners, internal and external signage, and it has been great working with her on this project; her elegant design for the exhibition perfectly showcases the collection.

Sophie Chessell and Claire Conti, Assistant Directors, Access and Learning, have worked tirelessly on the events and programs for Celebration and in many ways driven the organisational logistics of the exhibition; my heartfelt thanks to them both.

I owe warm thanks to Paul Webb, our wonderful Marketing Manager, who has been an enthusiastic supporter of Celebration, and to Graeme Tie, Collections Manager for his efforts in getting the show up and running.

My grateful thanks to Catherine Webb, who interned with me at CMAG in 2017 and has returned, undaunted, to volunteer; her work on catalogue entries and general

assistance in the visual arts area is much appreciated. Rhiannah McIntyre undertook sterling work with the data base and the collection files.

Thanks also to colleagues Kate Gardiner and Michael Bailey, to Ruth Oliphant, and all the fabulous Museum Assistants without whom we would have no show.

My enduring thanks to Rob Little and Sandy Shaw-Velzen of RLDI, for their outstanding contribution in photographing works for the exhibition so superbly; they have been incredibly accommodating and generous.

Thanks to Henry Han of The Framing Business, for his beautiful framing, and to Victoria Pearce of Endangered Heritage, for her conservation work.

Thanks also to our friends Derek O'Connor, Ben Taylor, and Peter Vandermark at the National Gallery of Australia, who came to our help with a tricky bit of installation.

And of course I would like to pay tribute to the artists represented in Celebration, without whom there is no show; thanks for your commitment to your practice and your contribution to the cultural

life of the Canberra region; also the gallerists, colleagues in contemporary art spaces and other public galleries – in many ways I believe we work collaboratively as singular parts of the whole, towards very similar ends.

I want also to acknowledge previous members of the professional staff of CMAG: Mark Van Veen, Assistant Director, Exhibitions & Collections, CMAG, with whom I collaborated on exhibitions, displays and acquisitions for the collection; former director Peter Haynes, who brought me to CMAG; and colleagues who preceded me, notably Emma Epstein, Curator of Visual Arts, and the late Angela Philp, the inaugural director of CMAG.

My special thanks, as always, to Gordon Bull.

Celebration: 20 years of collecting visual art at CMAG is my last show on staff here; it's been great.

Deborah Clark

Senior Curator, Visual Arts
Canberra Museum and Gallery



cmag.com.au

